



PNEUMATIC | **TR-900**

**WHEN ONLY THE  
BEST WILL DO**

## PERFORMANCE DEFINED



### TIRE LIFE

Trelleborg products guarantee **the best wear** performance in the industry. This results in longer tire life, **additional hours of usage**, reduced downtime and lower maintenance costs.



### STABILITY

Trelleborg tires are designed with **exceptional stability**. Our tires are engineered to ensure **proper distribution of heat** and to prevent excessive deflection under load.



### ENERGY SAVING

Trelleborg is the **largest approved tire manufacturer to the OEMs**. We work closely with them to ensure we meet the requirements of energy consumption. This results in **reduced fuel costs** for our customers.

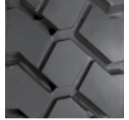


### COMFORT

Trelleborg recognizes the importance of a **safe working environment**. Our products are designed to minimize vibration and **keep noise to a minimum level**. We follow the strictest regulations for work safety while providing a comfortable ride.

## TRELLEBORG TR-900

The TR-900 is Trelleborg's radial option for industrial application. Designed to withstand today's demanding applications and modern equipment, this radial tire offers better stability, traction and security with its unique tread pattern and reinforced sidewalls as compared to a conventional tire.



TR-900

The TR-900 is ideal for applications with long runs. The radial construction allows for higher speed and a reduced heat build-up which helps to extend the life of the tire.

| Tire Size                  | LI/SI  | Rim          | Pattern | Tire Weight | Tread Depth | Width | Overall Diameter | Inflation Pressure | Counterbalanced Forklift Truck: load capacity up to 25km/h |              | Other Vehicles: load capacity @ 10 km/h |
|----------------------------|--------|--------------|---------|-------------|-------------|-------|------------------|--------------------|--|--------------|---|
|                            |        |              |         |             |             |       |                  |                    | Load Wheels  | Steer Wheels |   |
|                            |        |              |         | [kg]        | [mm]        | [mm]  | [mm]             | [bar]              | [kg]   | [kg]         | [kg]                                    |
| <b>5.00R8</b>              | 111 A5 | 3.00D-8      | TR-900  | 41,680      | 25          | 137   | 468              | 10.0               | 1420   | 1090         | 1420                                    |
| <b>6.00R9</b>              | 124 A5 | 4.00E-9      | TR-900  | 41,898      | 25          | 162   | 540              | 10.0               | 1885   | 1450         | 1885                                    |
| <b>6.50R10</b>             | 128 A5 | 5.00F-10     | TR-900  | 41,659      | 27          | 180   | 585              | 10.0               | 2340   | 1800         | 2340                                    |
| <b>7.00R12</b>             | 136 A5 | 5.00S-12     | TR-900  | 41,877      | 28          | 190   | 670              | 10.0               | 2915   | 2240         | 2915                                    |
| <b>7.00R15</b>             | 143 A5 | 5.5-15       | TR-900  | 41,790      | 28          | 195   | 736              | 10.0               | 3540   | 2725         | 3540                                    |
| <b>28x9R15 (225/75R15)</b> | 149 A5 | 7.0-15       | TR-900  | 33.8        | 25          | 230   | 706              | 10.0               | 4225   | 3250         | 4225                                    |
| <b>250R15 (250/70R15)</b>  | 153 A5 | 7.0-15       | TR-900  | 37.0        | 27          | 252   | 736              | 10.0               | 4745   | 3650         | 4745                                    |
| <b>8.25R15</b>             | 153 A5 | 6.5-15       | TR-900  | 47.4        | 32          | 232   | 838              | 10.0               | 4745   | 3650         | 4745                                    |
| <b>300R15 (315/70R15)</b>  | 165 A5 | 8.0-15       | TR-900  | 61.2        | 36          | 312   | 835              | 10.0               | 6695   | 5150         | 6695                                    |
| <b>10.00R20</b>            | 166 A5 | 7.5-20       | TR-900  | 85.8        | 35          | 294   | 1062             | 10.0               | 6890   | 5300         | 6890                                    |
| <b>12.00R20</b>            | 176 A5 | 8.5-20       | TR-900  | 114.7       | 41          | 320   | 1136             | 10.0               | 9230   | 7100         | 9230                                    |
| <b>12.00R24</b>            | 178 A5 | 8.5-24       | TR-900  | 141.0       | 39          | 322   | 1232             | 10.0               | 9750   | 7500         | 9750                                    |
| <b>14.00R24</b>            | 193 A5 | 10.0-24      | TR-900  | 228.0       | 64          | 390   | 1416             | 10.0               | 14950  | 11500        | 14950                                   |
| <b>16.00R25</b>            | 200 A5 | 11.25/2.0-25 | TR-900  | 259.6       | 56          | 424   | 1495             | 10.0               | 18200  | 14000        | 18200                                   |
| <b>18.00R25</b>            | 207 A5 | 13.00/2.5-25 | TR-900  | 398.9       | 68          | 500   | 1636             | 10.0               | 22750  | 17500        | 22750                                   |
| <b>18.00R33</b>            | 214 A5 | 13.00/2.5-33 | TR-900  | 496.0       | 74          | 497   | 1838             | 10.0               | 27560  | 21200        | 27560                                   |

