

Instruction Manual

Mechanic Lifter



Note: The Owner/Operator must read carefully and understand all the information presented here before operation.

THANK YOU FOR CHOOSING OURMECHANIC LIFTER. FOR YOUR SAFETY AND CORRECT OPERATION, PLEASE CAREFULLY READ THE MANUAL BEFORE USE.

NOTE: All of the information reported herein is based on data available at the time of printing. The factory reserves the right to modify its own products at any time without notice or incurring in any sanction. Please verify with the factory for possible updates.

1. SPECIFICATION

Model		MR200
Capacity		200
Platform Height (Max.)	(mm)	120
	(Min.) (mm)	95
Fork width	(mm)	220
Fork length	(mm)	580
Net weight	(kg)	21

2. OPERATION

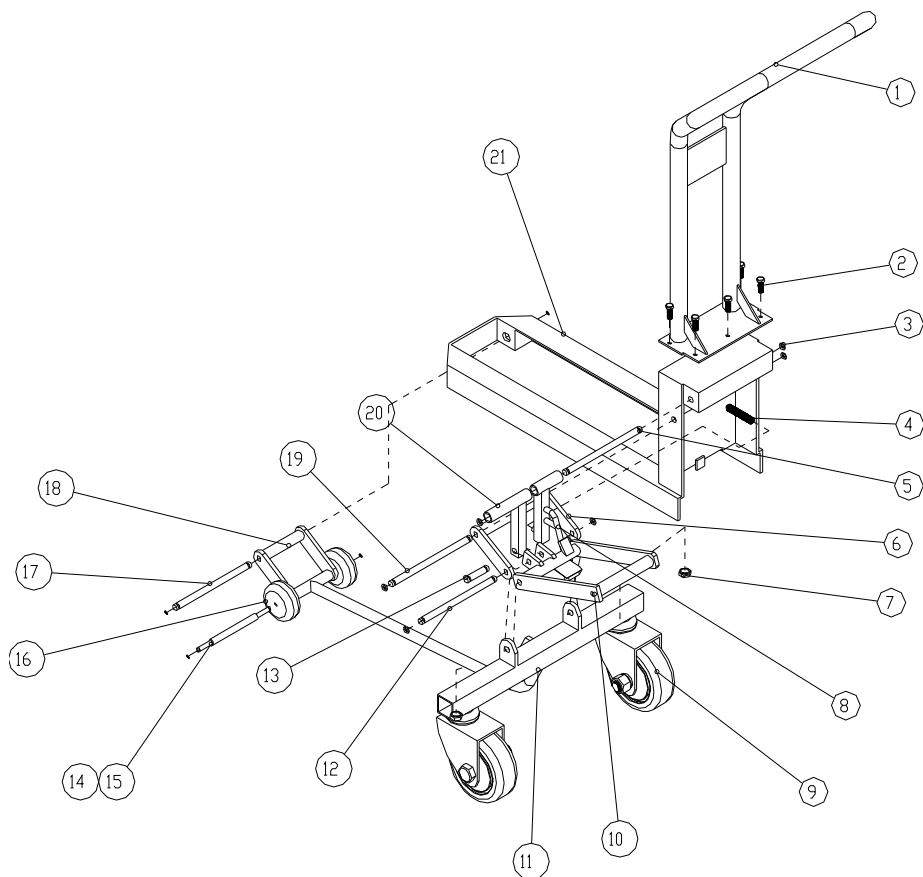
- For moving and transporting display pallets, fruit pallet, etc...
- Large wheels of polyurethane ensuring an excellent manoeuvrability
- Simple to operate

RAISE: Put the No. 10 down, and raised the mechanic lifter, then the operation can trundle the lifter forward location you wanted.

LOWER: Put the No. 10 down while step on the No. 19, and raised the feet slowly until the lifter is lowered the lowest place, then pull the lifter back.

Notice: Please see the below for the No. of part.

3. EXPLODED VIEW & PART LIST



No.	Description	Qty	Remark
1	Handle	1	
2	Screw	6	
3	Clip spring $\Phi 12$	10	
4	Spring	1	
5	Pin shaft $\Phi 12 \times 210$	1	
6	Lift connector	1	
7	Nut M16	2	
8	Pedal	1	
9	Wheel $\Phi 120$	2	
10	Lift pedal	1	
11	Lift mechanism	1	
12	Pin shaft $\Phi 12 \times 200$	1	
13	Pin shaft $\Phi 12 \times 50$	1	
14	Shaft $\Phi 12 \times 200$	1	
15	Clip spring	2	
16	Wheel $\Phi 80$	2	
17	Pin shaft $\Phi 12 \times 140$	1	
18	Lift bascule	1	
19	Pin shaft $\Phi 12 \times 220$	1	
20	Lift rod	1	
21	Carriage	1	