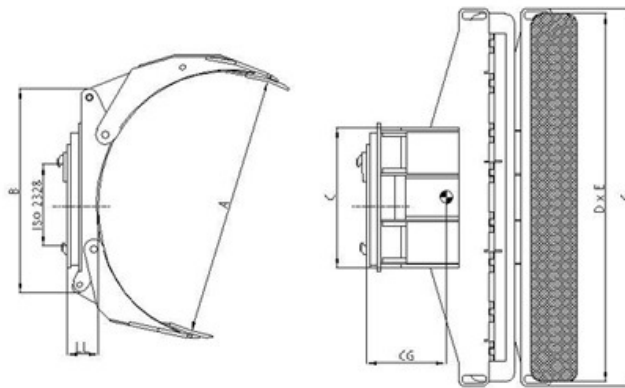


**CR-TY** Rotating tyre clamps 360°



2 hydraulic functions  
 Maximum pressure 160 bar  
 Recommended oil flow 30 l/min  
 LL and CG are in mm, with mounting angle 2°  
 G - pad protectors encumbrance

Options:  
 Different contact pads on request  
 Different pad covers (black rubber, yellow non-marking rubber, plain steel, etc)  
 180° rotation system available on request

\* Positionable short arm

MODEL	CAPACITY kg/mm	A ROLL RANGE mm	B mm	C mm	DxE mm	LL mm	CG mm	KG/180° kg	KG/360° kg	ISO 2328	G mm
CR1265TY*	1200/650	250/1300	1190	675	1800x250	175	312	625	610	2	1850
CR1266TY	1200/650	450/1300	1190	675	1800x250	175	312	615	602	2	1850
CR1280TY*	1200/800	250/1600	1190	675	1800x250	175	345	805	790	2/3	1850
CR1281TY	1200/800	450/1600	1190	675	1800x250	175	345	795	780	2/3	1850

AWRE OÜ  
 Reg. address: Pärnumaa  
 Lemmetsa 88311, Tiidu tee  
 Reg. nr. 10914764

info@forklift.ee  
 Tartu: 5090770  
 Pärnu: 5029762  
 Tallinn: 53434946