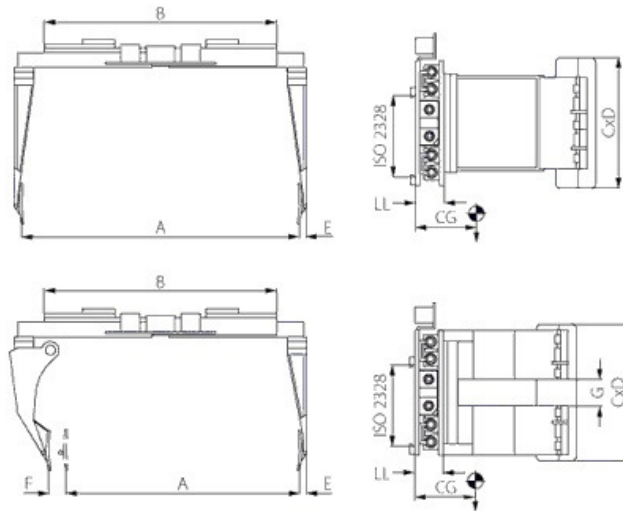


PS-B No rotating paper roll clamps



1 hydraulic function
 Maximum pressure 160 bar
 Recommended oil flow 30 l/min
 PS6/8B2 arms with same length

Options:
 Integrated sideshifter available

On demand:
 Pin-type mounting for PS8 available on request

* 2 hydraulic functions; left arm split with hydraulic compensation +- 70 mm for different diameter rollers

MODEL	CAPACITY kg/mm	A ROLL RANGE mm	OPENING mm	B mm	CxD mm	E mm	F mm	G mm	LL mm	CG mm	WEIGHT kg	ISO 2328
PS6.B	1X1600	800/1600	640/2040	1150	865/330	35			130	230	635	3
PS8.B2	2X1800	850/1270	770/2820	1620	1200/330	95			175	220	1000	4
PS8.B4*	4X1900	850/1270	670/2720	1620	1200/330	95	80	200	175	270	1425	4

AWRE OÜ
 Reg. address: Pärnumaa
 Lemmetsa 88311, Tiidu tee
 Reg. nr. 10914764

info@forklift.ee
 Tartu: 5090770
 Pärnu: 5029762
 Tallinn: 53434946