



ENERGY GENERATION

CX12 S2 1150X520

SMALL SIZE, GREAT MANOEUVRABILITY



CX12-CX14

The CX electric pallet trucks are available in different versions equipped with MOSFET technology. They are suitable for carrying loads on smooth or paved surfaces. Its small size and turning radius make it the ideal tool to work with in confined spaces, such as lorries or narrow aisles.

MANOEUVRABILITY

Thanks to the B1 width, which is equal to the fork gauge, and the L2 measurement of 360 mm, the CX12 electronic pallet truck is the ideal tool for the handling of pallets on lorries, in supermarket aisles and any application where space is limited. This machine is the best configuration in its category thanks to the frame width, in-service weight and turning radius, thus guaranteeing great manoeuvrability and compactness.



STEERING WHEEL AND CONTROLS

- Ergonomic tiller
- Luminous indicator for battery state control.
- Butterfly valves for traction control.
- Safety pushbutton with warning buzzer.
- Forks way up/down control positioned on both sides of the handle (only on CX14).
- Hour counter in the Plus and Gel versions (only on CX14).
- "Tortoise" pushbutton for slow motion, which allows for the carrying out of operations with the tiller in vertical position.



PLUS BATTERIES

The Plus versions are equipped with semitraction batteries that guarantee greater autonomy and an operative life that allows for up to 5 times higher a number of charge life cycles.

Thanks to the design of its guard, access to batteries is easy and rapid; this model also optimally combines size, power and low running cost also due to the integrated batteries and battery charger.



STABILIZERS

Two stabilizing wheels enable movement even on more difficult surfaces thus guaranteeing maximum stability in any condition of use.



Description

1.1 Manufacturer			LIFTER
1.3 Drive	Type		Electric
1.4 Operator type (Pedestrian/Standing)	Type		PEDESTRIAN
1.5 Load capacity	Q	Kg	1200
1.6 Load centre distance	c	mm	600
1.8 Load distance, center or drive axle to fork	x	mm	886
1.9 Wheel base	y	mm	1119

Weights

2.1 Service weight		Kg	145
2.2 Axle load, laden rear		Kg	910
2.2 Axle load, laden front		Kg	435
2.3 Axle load, unladen front		Kg	114
2.3 Axle load, unladen rear		Kg	31

Tyres/Chassis

3.1 Tyres: Steering wheels	Type		RUBBER
3.1 Tyres: stabilizers wheels - front	Type		POLY.I.
3.1 Tyres: Load rollers	Type		NYLON
3.2 Tyre size: Steering wheels	Width	mm	50
3.2 Tyre size: Steering wheels	Diameter	mm	186
3.3 Tyre size: rear wheels	Diameter	mm	82
3.3 Tyre size: rear wheels	Width	mm	82
3.4 Tyre size: stabilizers wheels - front	Diameter	mm	75
3.4 Tyre size: stabilizers wheels - front	Width	mm	32
3.5 Wheels, number: rear	Q.ty	nr	2
3.5 Wheels, number: traction wheel, front	Q.ty	nr	2
3.6 Tread, front	b10	mm	369
3.7 Tread, rear	b11	mm	371

Dimensions

4.4 Lift height	h3 mm	115
4.6 Initial lift	h5 mm	NOT APPLICABLE
4.9 Height of tiller in drive position min/max	h14 mm	1345
4.15 Height, lowered	h13 mm	85
4.19 Overall length	l1 mm	1510
4.19 Overall length with lowered platform (Optional LX-FX series)	l1 mm	NOT APPLICABLE
4.19 Overall length with raised platform (Optional LX-FX series)	l1 mm	NOT APPLICABLE
4.20 Length to face of forks	l2 mm	360
4.20 Length to face of forks with lowered platform	l2 mm	NOT APPLICABLE
4.20 Length to face of forks with raised platform	l2 mm	NOT APPLICABLE
4.22 Fork dimensions (thickness, width, length)	s mm	55
4.22 Fork width	e mm	150
4.22 Fork length	l mm	1150
4.25 Distance between fork arms	b5 mm	520
4.32 Ground clearance, centre of wheelbase	m2 mm	30
4.34 Aisle width	Ast mm	1782
4.34 Aisle width with lowered platform (Optional for LX-FX series)	Ast mm	NOT APPLICABLE
4.34 Aisle width with raised platform (Optional for LX-FX series)	Ast mm	NOT APPLICABLE
4.35 Turning radius	Wa mm	1268
4.35 Turning radius with lowered platform	Wa mm	NOT APPLICABLE
4.35 Turning radius with raised platform	Wa mm	NOT APPLICABLE

Performance data

5.1 Travel speed laden	Km/h	4.3
5.1 Travel speed unladen	Km/h	4.8
5.1 Travel speed laden with platform in lowered position	Km/h	NOT APPLICABLE
5.1 Travel speed unladen with platform in lowered position	Km/h	NOT APPLICABLE
5.2 Lifting speed laden	m/s (strokes)	0.03
5.2 Lifting speed unladen	m/s (strokes)	0.04
5.3 Lowering speed laden	m/s	0.05
5.3 Lowering speed unladen	m/s	0.02
5.8 Max gradeability laden	%	10
5.8 Max gradeability unladen	%	25
5.10 Service brake	Type	REVERSE CURRENT BRAKING

Electric motors

6.1 Drive motor power	kW	0.35
6.2 Lift motor power	kW	0.4
6.4 Battery voltage	V	24
6.4 Battery capacity, Min	Ah	55
6.4 Battery capacity, Max	Ah	55
6.5 Battery weight, Min	Kg	24
6.5 Battery weight, Max	Kg	24
6.6 Energy consumption according to VDI cycle	kWh/h	0.28

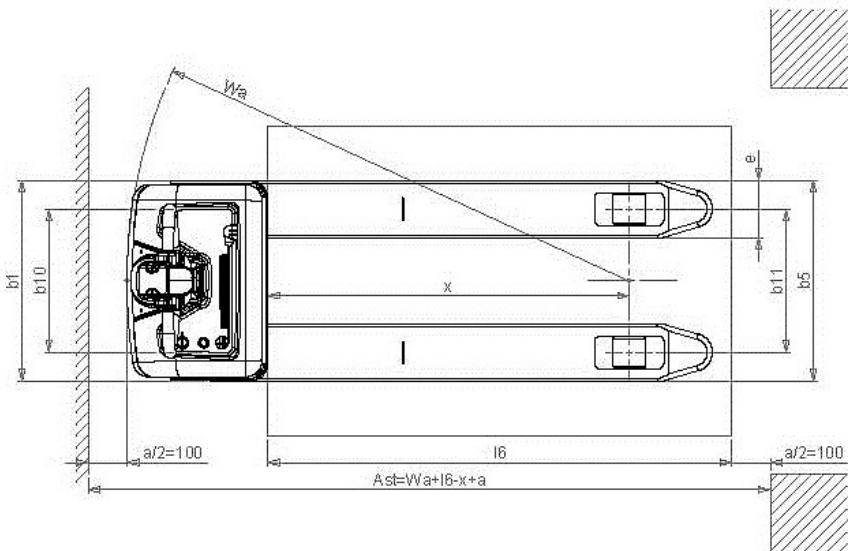
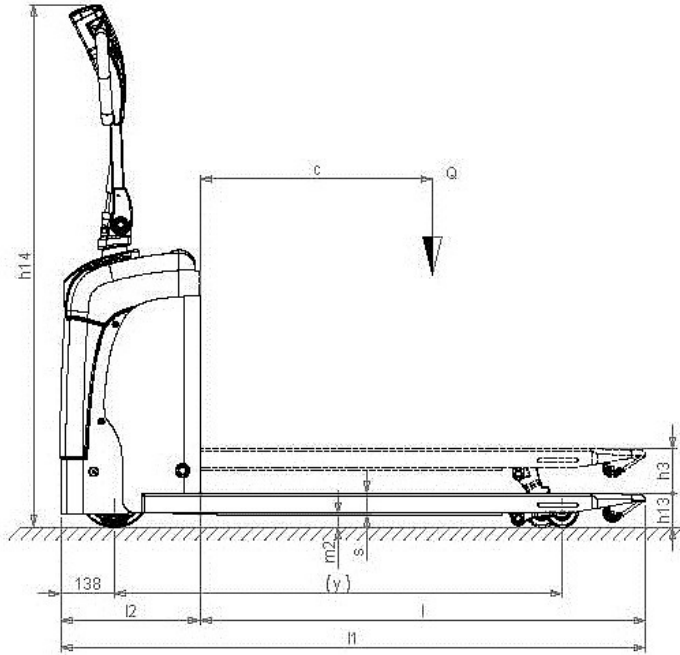
On-board battery charger

Instruments

Miscellaneous

Operating conditions

*Integrated battery and battery charger



Printed on 19/02/2015 (ID 452)

©2012 | PR INDUSTRIAL s.r.l. | All rights reserved | Image shown may not reflect actual package. Specifications subject to change without notice | ENERGY GENERATION is registered trademarks of PR INDUSTRIAL s.r.l. Other company, product or service names may be trademarks or service marks of others. RevA (06/2012).

