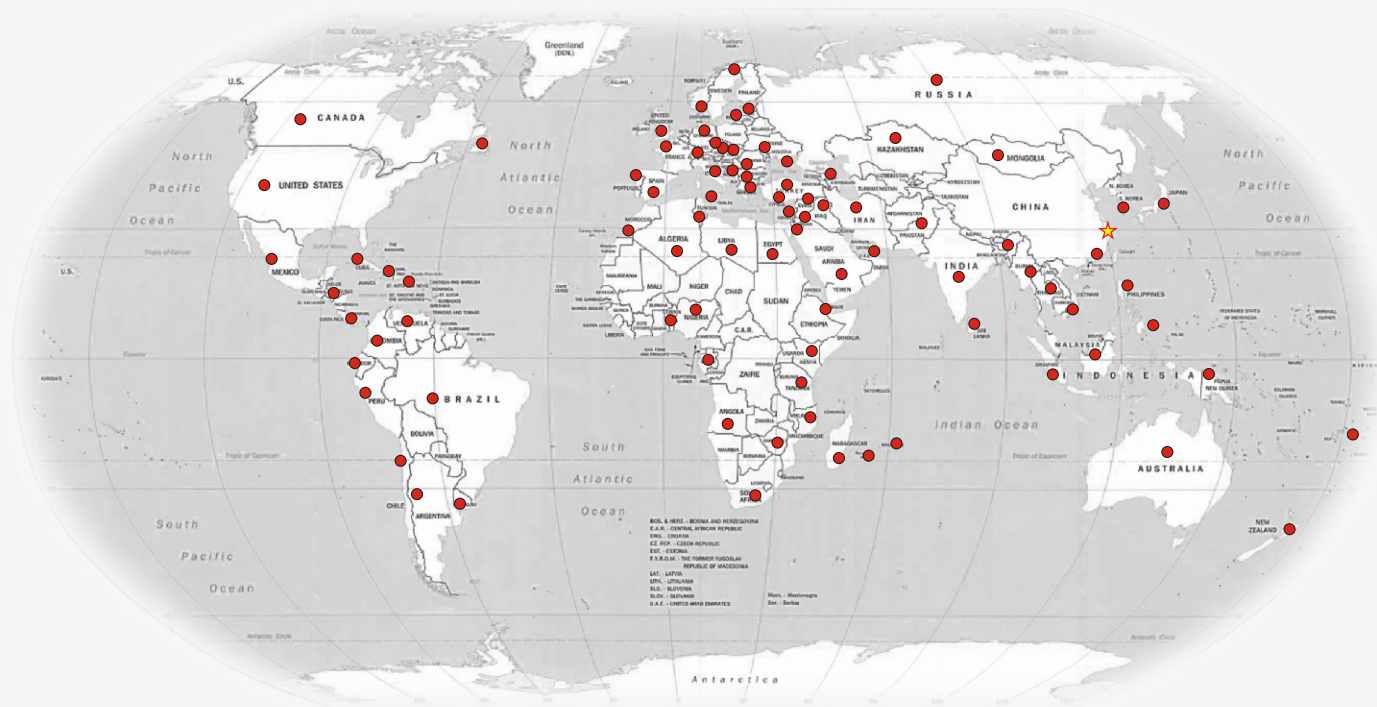


# G<sub>LOBAL</sub> SALES NETWORK



CE CERTIFICATE



ISO14001: 2004



ISO9001: 2008

**HANGCHA GROUP CO., LTD.**  
(Zhejiang Hangcha Imp.&Exp.Co.,ltd.)

[www.hcforklift.com](http://www.hcforklift.com)

Add:398 Shi Qiao Road, Hangzhou Zhejiang province, China(310022)  
Factory site:No.88, Donghuan Rd., Economic Development Zone Lin'an, Zhejiang, China(311305)  
Tel: +86-571-88926755  
Fax: +86-571-88926789 88132890  
E-mail: [sales@hcforklift.com](mailto:sales@hcforklift.com)  
[whsales@hcforklift.com](mailto:whsales@hcforklift.com)

HANGCHA GROUP CO., LTD. Reserves the right to make any changes without notice concerning colors, equipment, or specifications detailed in this brochure, or to discontinue individual models. The colors of trucks, delivered may differ slightly from those in brochures.

2012 VERSION 1/ COPYRIGHT 2011/09

## BASIC RANGE 2.0t Electric Pallet Truck



**HANGCHA GROUP CO., LTD.**



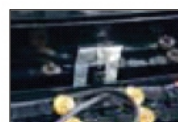
## NEW GENERATION

Latest AC technology:

The latest Zapi or curtis AC drive system is applied on the new generation:

- High performance, quick response to the slighted command from the driver
- Excellent acceleration, higher productivity
- Energy regeneration during braking
- Hill start without moving backwards
- Quick direction change

## SAFETY



Battery tray is locked by a spring tab, which can prevent the battery moves when truck travelling

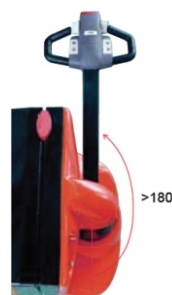


Emergency stop button is mounted at the right side of the truck body, easy access to operator



Big contact size stop button on tiller head in event of contact with the operator

## OPERATION



For pedestrian pallet truck, the tiller rotates more than 180 degrees with minimal effort.

New control handle provides safe and smooth operation for the driver. All the operation can be operated by fingertip with either hand.



When side guards are folded, the truck speed will automatically reduced to 50%, to ensure the safety of operator.

The creep speed control allows the operator to operate the truck in tight area, saves nearly 30% of the required maneuvering space.



## DURABILITY

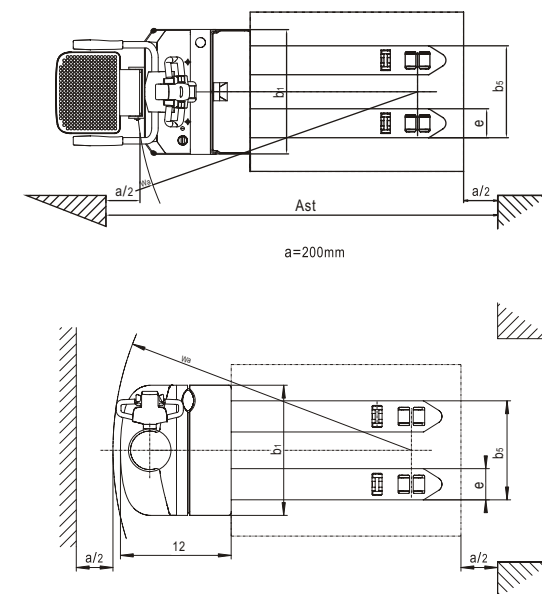
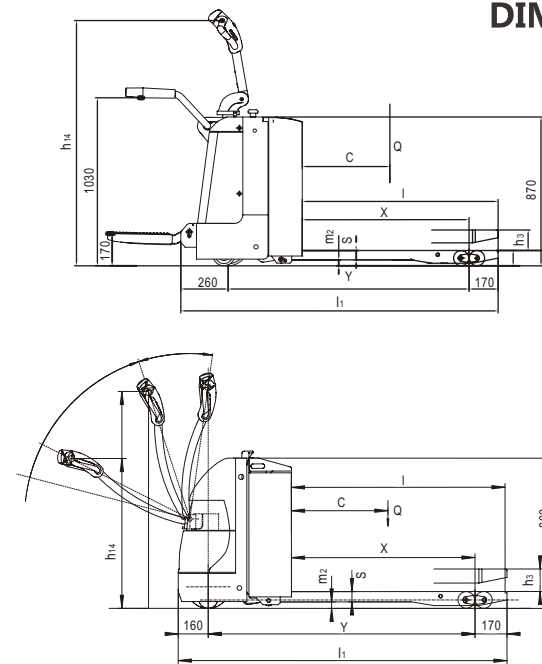


The tapered fork design provides easy pallet entry and exit.

Heavy-duty Monarch Hydraulic motor is integrated with pump and reservoir to assure positive alignment and maximum strength.

The drive unit gear box is designed for ease of maintenance. All gears are immersed in oil bath for long life.

## DIMENSIONS



## STAND-ON ELECTRIC PALLET TRUCK 2.0T

| Characteristics | 1.1     | Manufacturer                                                         |                             | HANGCHA GROUP CO.,LTD. |             |                  |             |
|-----------------|---------|----------------------------------------------------------------------|-----------------------------|------------------------|-------------|------------------|-------------|
|                 | 1.2     | Type designation                                                     |                             | CBD20-A                |             | CBD20-AS         |             |
|                 | 1.3     | Power unit:battery,diesel,gasoline,fuel,LP gas                       |                             | Battery                |             | Battery          |             |
|                 | 1.4     | Operation:hand,pedestrian,standing,seated,order-picker               |                             | Pedestrian             |             | Standing         |             |
|                 | 1.5     | Load capacity                                                        | Q(kg)                       | 2000                   |             | 2000             |             |
|                 | 1.6     | Load center                                                          | c(mm)                       | 600                    |             | 600              |             |
|                 | 1.8     | Load distance,center of drive axle to fork                           | x(mm)                       | 916/982                | 937/1003    | 916/982          | 937/1003    |
|                 | 1.9     | Wheelbase(lowered)                                                   | y(mm)                       | 1418                   | 1438        | 1420             | 1440        |
|                 | Weights | 2.1                                                                  | Service weight with battery | kg                     | 535         |                  | 645         |
| 2.2             |         | Axle loading with load,operator/load side                            | kg                          | 955/1580               |             | 1056/1589        |             |
| 2.3             |         | Axle loading without load,opeator/load side                          | kg                          | 430/105                |             | 521/124          |             |
| Wheels, Chassis | 3.1     | Tyres:solid rubber(R),superelastic(S), pneumatic(P),polyurethane(PU) |                             | PU/PU                  |             | PU/PU            |             |
|                 | 3.2     | Tyre size,operator side                                              |                             | Φ230X75                |             | Φ230X75          |             |
|                 | 3.3     | Tyre size,load side                                                  |                             | 2xΦ85X70/Φ85X115       |             | 2xΦ85X70/Φ85X115 |             |
|                 | 3.4     | Additional wheels(dimensions)                                        |                             | Φ85X48                 |             | Φ130X55          |             |
|                 | 3.5     | Wheel,number operator/load side(x=drive)                             |                             | 1x+2/4                 | 1x+2/2      | 1x+2/4           | 1x+2/2      |
|                 | 3.6     | Tread,Operator side                                                  | b <sub>10</sub> (mm)        | 498                    |             | 510              |             |
|                 | 3.7     | Tread,Load side                                                      | b <sub>11</sub> (mm)        | 370/515                |             | 370/515          |             |
| Dimensions      | 4.4     | Lift                                                                 | h <sub>3</sub> (mm)         | 125                    |             | 125              |             |
|                 | 4.9     | Height of tiller in drive position,min./max.                         | h <sub>14</sub> (mm)        | 825/1190               |             | 1073/1320        |             |
|                 | 4.15    | Fork height,lowered                                                  | h <sub>13</sub> (mm)        | 85                     |             | 85               |             |
|                 | 4.19    | Overall length                                                       | l <sub>1</sub> (mm)         | 1748                   | 1818        | 1805             | 1875        |
|                 | 4.20    | Length to face of forks                                              | l <sub>2</sub> (mm)         | 598                    |             | 655              |             |
|                 | 4.21    | Overall width                                                        | b <sub>1</sub> (mm)         | 710                    |             | 730              |             |
|                 | 4.22    | Fork dimensions                                                      | S/e/l(mm)                   | 55x170x1150            | 55x170x1220 | 55x170x1150      | 55x170x1220 |
|                 | 4.25    | Distance between fork-arms                                           | b <sub>2</sub> (mm)         | 540                    | 685         | 540              | 685         |
|                 | 4.32    | Ground clearance,center of wheelbase                                 | m <sub>2</sub> (mm)         | 35                     |             | 35               |             |
|                 | 4.33    | Aisle width for pallets 1000x1200 cross forks                        | Ast(mm)                     | 1856                   |             | 1856             |             |
|                 | 4.34    | Aisle width for pallets 800x1200 along forks                         | Ast(mm)                     | 2056                   |             | 2069             |             |
|                 | 4.35    | Turning radius                                                       | Wa(mm)                      | 1638                   | 1659        | 1651             | 1672        |
| Performance     | 5.1     | Travel speed,with/without load                                       | km/h                        | 5/5.5                  |             | 6.5/7.5          |             |
|                 | 5.2     | Lift speed,with/without load                                         | mm/s                        | 51/60                  |             | 56/60            |             |
|                 | 5.3     | Lowering speed,with/without load                                     | mm/s                        | 59/52                  |             | 57/57            |             |
|                 | 5.8     | Gradeability,with/without load                                       | %                           | 6/8                    |             | 6/8              |             |
|                 | 5.10    | Service brake                                                        |                             | Electromagnetic        |             | Electromagnetic  |             |
| Drive           | 6.1     | Drive motor rating S2 60 min.                                        | kW                          | 1.1                    |             | 1.5              |             |
|                 | 6.2     | Lift motor rating at S3 15%                                          | kW                          | 0.84                   |             | 2.2              |             |
|                 | 6.4     | Battery voltage,nominal capacity(5h)                                 | V/Ah                        | 24/210                 |             | 24/210           |             |
|                 | 6.5     | Battery weight                                                       | kg                          | 205                    |             | 205              |             |
|                 |         | Traction control                                                     |                             | ZAPI AC0               |             | CURTIS1230       |             |