



TAURULIFT
T 276 H
T 306 H



www.ausa.com

AUSA Center, S.L. ● Ctra. de Vic, Km 2.8 - P.O.B. 194. 08243 Manresa - BARCELONA (ESPAÑA) Tel.: +34 93 874 73 11 - E-mail: ausa@ausa.com

ISO 9001

ISO 14001



(Sede central AUSA-Manresa)

- AUSA Madrid** ● Pol. Ind. Coslada - C. Marconi 15-17. 28823 Coslada - MADRID (ESPAÑA) Tel.: +34 91 669 00 06 - E-mail: ausa.madrid@ausa.com
- AUSA France** ● Z. I. Saint Charles - Rue de Zürich, 66000 PERPIGNAN (FRANCE) Tel.: +33 (0) 4 68 54 38 97 - E-mail: ausa.france@ausa.com
- AUSA Deutschland** ● Heinrich - Welken Str. 5. 59069 HAMM (GERMANY) Tel.: +49 (0) 2385-9359362 - E-mail: ausa.deutschland@ausa.com
- BEIJING Rep. Office** ● Address Room 527. HengXiang Building, Tuanjieshu Nanli, Chaoyang District. - BEIJING 100026 (CHINA)
 Tel.: 86-10-8597 1983 - Fax: 86-10-8597 1993 - E-mail: ausa.china@ausa.com
- AUSA UK** ● Tel.: 07970639988 - E-mail: ausa.uk@ausa.com
- AUSA Brasil** ● Tel.: +55 51 33622111 - E-mail: ausa.brasil@ausa.com
- AUSA México** ● Gustavo Baz, 47. 53489 Naucalpan de Juarez, Edo. de México (MÉXICO) Tel.: +55 2166-9066 - E-mail: ausa.mexico@ausa.com

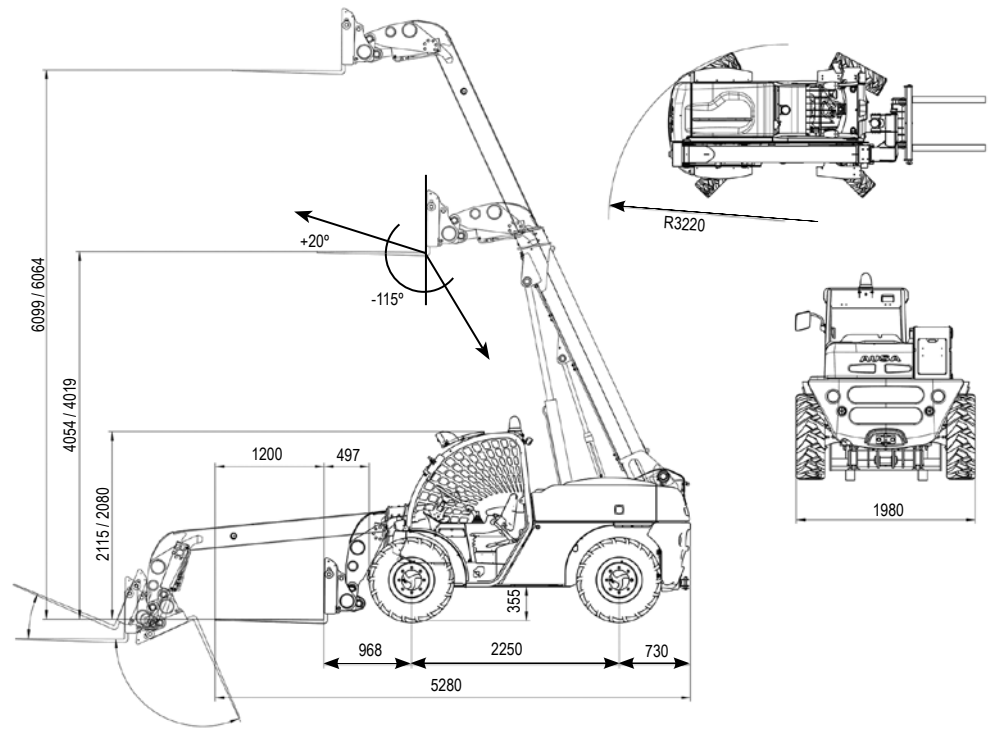


FEM-AEM



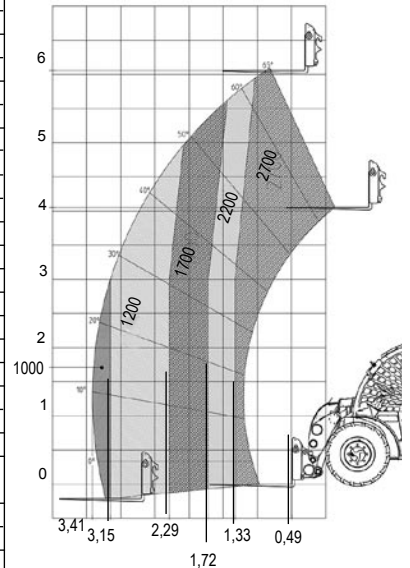
T276H_2700 Kg

AUSA
www.ausa.com



TECHNICAL SPECIFICATIONS

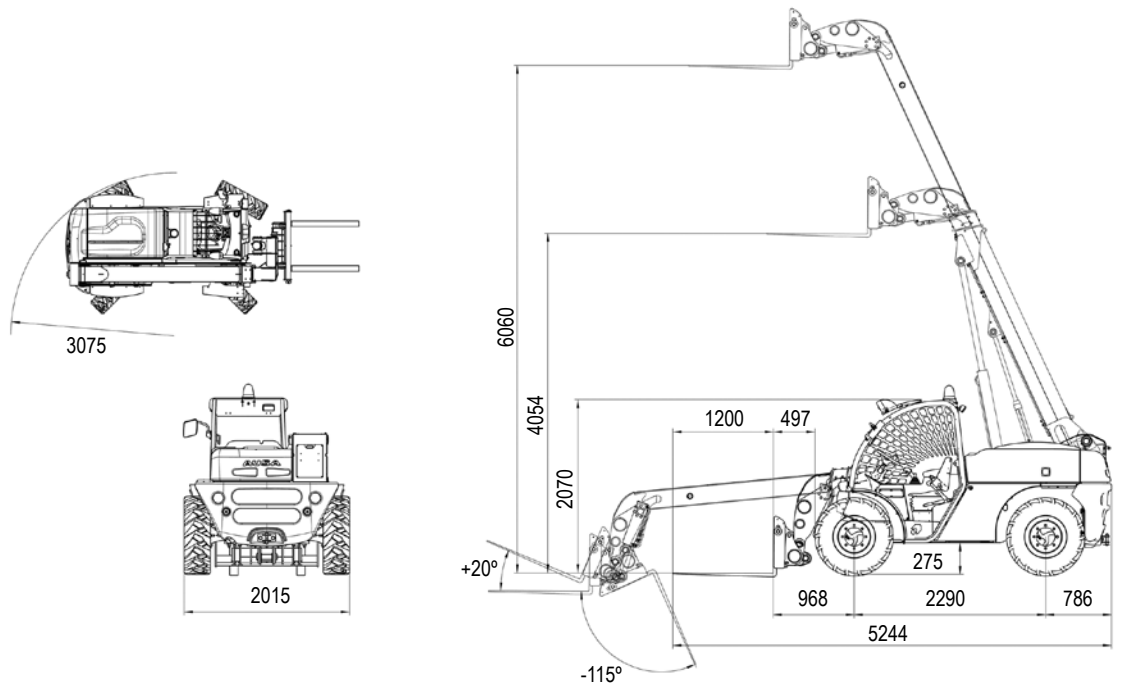
		T 276 H	
Load capacity	Max. load (Kg)	2700 @ 500 mm	
	Load at max. height (Kg)	2700 @ 500 mm	
Lifting height	Maximum lifting height (mm)	6100 @ 500 mm	
	Maximum lifting height at max. load (mm)	6100 @ 500 mm	
Reach	Max reach (mm)	3400	
	Capacity at max reach (Kg)	1000	
Engine	Diesel	Kubota V3600-T	
	Power acc./ SAE J 1995 (KW/HP)	63 / 85.6	
	N° of cylinders	4	
	Cooling system	Water	
Traction		4x4x4 permanent	
Transmission		Hydrostatic 2 gears. Electric gear inverter in joystick	
Engine starting system		Elektrisch	
Speed (Maximum) (Km/h)		24	
Unladen weight (Kg)		5015	
Gradeability (kg)		40 % Standard tyres / 45% All Terrain Tyres (optional)	
Hydraulic circuit		36 cc. gear pump. Working pressure 240 bar	
Tyres	Front	Asphaltic 12,5 / 80-18	
	Rear	Asphaltic 12,5 / 80-18	
External turning radius (mm)		3220	
Steering		Hydraulic	
		Front wheel steer / All wheel steer / Crab steer	
Tank capacity	Fuel (l)	110	
	Hydraulic fluid (l)	70	
Service brake		Disc brake, hydraulically actuated	
Parking brake		Disc brake, mechanically actuated	
STANDARD EQUIPMENT		Homologated FOPS/ROPS tilting cabin for easy service	
		Joystick with integrated functions, "total control of movements"	
		Adjustable ergonomic seat with safety belt	
		Rear view mirror	
		Audible reverse warning	
		Rotating beacon	
		Antivandalic system	
		Limited slip differential on front axle	
		4th auxiliary hydraulic service with quick coupling	
		Road Traffic Selector: Lock joystick and 2 front wheels steering	
		Active safety system with boom locking by instability/	
		Engine start lock with hand brake activated / Control arm lock without driver	
	OPTIONAL EQUIPMENT		Semi-closed cabin
			Closed soundproof cabin with heater
			Air conditioning integrated under the cabin
			Radiostereo CD
			Adjustable steering column
			Front protective grille
			Load backrest
			Electronic anti theft protection system
			Homologated lighting equipment
			Working light
		5th auxiliary hydraulic service with quick coupling	
		Hydraulic quick coupling system (Universal SLL type or Euro)	
		4th auxiliary hydraulic service with continuous flow	
		Other tyres pattern available	
		FEM III forks carriage with or without integrated side-sift (TDL)	
		Bucket 4 in 1	
		Bucket 600 lt / Bucket 700 lt / Bucket 1.000 lt	
		Multiple attachments available proven and tested from factory	



AUSA reserves the right to make any changes in the specifications without prior notice.

T 306 H_3000 kg

AUSA
www.ausa.com



TECHNICAL SPECIFICATIONS

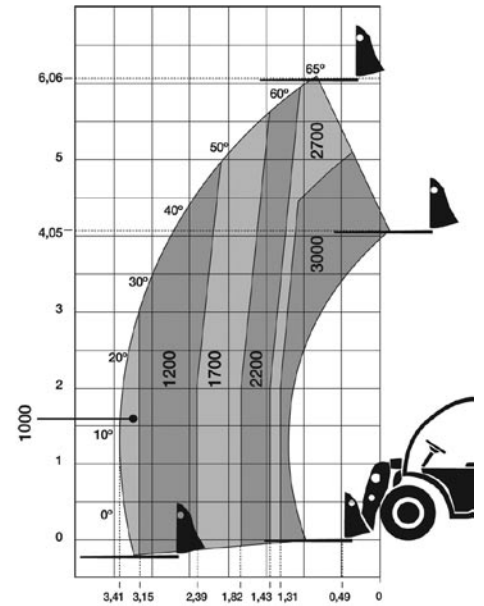
		T 306 H
Load capacity	Max. load (Kg)	3000 @ 500
	Load at max. height (Kg)	2700 @ 500
Lifting height	Maximum lifting height (mm)	6060 @ 500
	Lifting height at max. load (mm)	5100 @ 500
Reach	Max reach (mm)	3410
	Capacity at max reach (Kg)	1000
Unload weight (Kg)		5400
Engine	Turbo-diesel	Kubota V-3600-T
	Power/SAE J1995 (KW / HP)	62.3 / 84.7
	Torque	270 Nm
	N° of cylinders	4
	Cooling system	Water
Traction		4x4x4 permanent
Steering		Hydraulic
		Front wheel steer / All wheel steer / Crab steer
Transmission		Hydrostatic 1 gear
Engine starting system		Electric
Speed (km/h)		24
Axles		Dana Spicer
Gradeability		43%
Hydraulic circuit	Working pressure	260 bar
	Hydraulic pump	36 cc
	Flow circuit (l/min)	73.4
Tyres	Front	14 - 17.5
	Rear	14 - 17.5
External turning radius (mm)		3075
Tank capacity	Fuel (l)	110
	Hydraulic fluid (l)	70
Service brake		Disc brake
Parking brake		Mecanically actuated disk-brake

STANDARD EQUIPMENT

- Homologated FOPS/ROPS tilting cabin for easy service
- Joystick with integrated functions, "total control of movements"
- Adjustable ergonomic seat with safety belt
- Rear view mirror
- Audible reverse warning
- Rotating beacon
- Antivandalic system
- Limited slip differential on front axle
- 4th auxiliary hydraulic service with quick coupling
- Road Traffic Selector: Lock joystick and 2 front wheels steering
- Active safety system with boom locking by instability/ Engine start lock with hand brake activated / Control arm lock without driver
- Semi-closed cabin
- Closed soundproof cabin with heater
- Air conditioning integrated under the cabin
- Radiostereo CD
- Adjustable steering column
- Front protective grille

OPTIONAL EQUIPMENT

- Load backrest
- Electronic anti theft protection system
- Homologated lighting equipment
- Working light
- 5th auxiliary hydraulic service with quick coupling
- Hydraulic quick coupling system (Universal SLL type or Euro)
- 4th auxiliary hydraulic service with continuous flow
- Other tyres pattern available
- FEM III forks carriage with or without integrated side-sift (TDL)
- Bucket 4 in 1
- Bucket 600 lt / Bucket 700 lt / Bucket 1.000 lt
- Multiple attachments available proven and tested from factory



AUSA reserves the right to make any changes in the specifications without prior notice.