



TAURULIFT T 235 H



www.ausa.com

AUSA Center, S.L. ● Ctra. de Vic, Km 2.8 - P.O.B. 194. 08243 Manresa - BARCELONA (ESPAÑA) Tel.: +34 93 874 73 11 - E-mail: ausa@ausa.com



(Sede central AUSA-Manresa)

- AUSA Madrid** ● Pol. Ind. Coslada - C. Marconi 15-17. 28823 Coslada - MADRID (ESPAÑA) Tel.: +34 91 669 00 06 - E-mail: ausa.madrid@ausa.com
- AUSA France** ● Z. I. Saint Charles - Rue de Zürich, 66000 PERPIGNAN (FRANCE) Tel.: +33 (0) 4 68 54 38 97 - E-mail: ausa.france@ausa.com
- AUSA Deutschland** ● Heinrich - Welken Str. 5. 59069 HAMM (GERMANY) Tel.: +49 (0) 2385-9359362 - E-mail: ausa.deutschland@ausa.com
- BEIJING Rep. Office** ● Address Room 527. HengXiang Building, Tuanjiehu Nanli, Chaoyang District. - BEIJING 100026 (CHINA)
Tel.: 86-10-8597 1983 - Fax: 86-10-8597 1993 - E-mail: ausa.china@ausa.com
- AUSA UK** ● Tel.: 07970639988 - E-mail: ausa.uk@ausa.com
- AUSA Brasil** ● Tel.: +55 51 33622111 - E-mail: ausa.brasil@ausa.com
- AUSA México** ● Gustavo Baz, 47. 53489 Naucalpan de Juárez, Edo. de México (MÉXICO) Tel.: +55 2166-9066 - E-mail: ausa.mexico@ausa.com

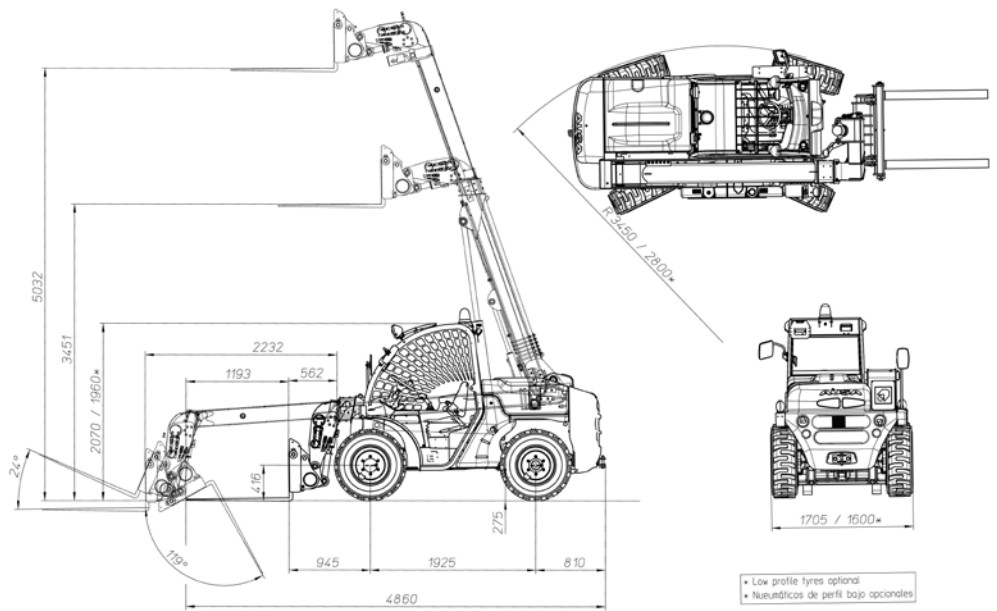


FEM-AEM



T 235 H

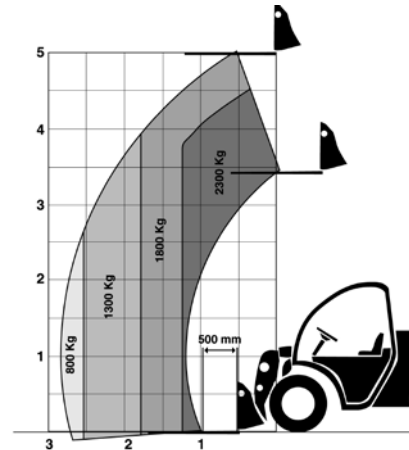
AUSA
www.ausa.com



• Low profile tyres optional
• Neumáticos de perfil bajo opcionales

TECHNICAL SPECIFICATIONS

		T 235 H
Load capacity	Max. load	2.300 Kg @ 500 mm
	Load at max. height	1.800 Kg @ 500 mm
Lifting height	Maximum lifting height	5.000 mm @ 500 mm
	Lifting height at max. load	4.500 mm @ 500 mm
Reach	Max reach	2.732 mm
	Capacity at max reach	800 kg (1.300 Kg @ 2.550 mm)
Unload weight		4.700 Kg
Engine	Diesel	Kubota V-2403
	Power / rpm (SAE J1995)	36,5 Kw (50 CV)
	Nº of cylinders	4
	Cooling system	Water
Traction		4x4x4 permanent
Transmission		Hydrostatic with variable flow pump and automatic regulation
		Electric gear inverter in joystick
Engine starting system		Electric
Speed		24 Km/h
Gradeability		44%
Hydraulic circuit	Working pressure	240 bar
	Hydraulic pump	24 cc
	Flow circuit	56 l/min
Tyres	Front	12 - 16.5 / 27x10-12*
	Rear	12 - 16.5 / 27x10-12*
External turning radius (mm)		3.450 mm / 2800 mm
Steering	Type	Hydraulic
	Mode	front wheel steer / all wheel steer / crab steer
Tank capacity	Fuel	65 l
	Hydraulic fluid	70 l
Service brake		Disc brake, hydraulically actuated
Parking brake		Disc brake, mechanically actuated



STANDARD EQUIPMENT

Homologated FOPS/ROPS tilting cabin for easy service
Joystick with integrated functions, "total control of movements"
Adjustable ergonomic seat with safety belt
Rear view mirror
Audible reverse warning
Rotating beacon
Antivandalic system
Limited slip differential on front axle
4th auxiliary hydraulic service with quick coupling
Road Traffic Selector: Lock joystick and 2 front wheels steering
Active safety system with boom locking by instability/
Engine start lock with hand brake activated / Control arm lock without driver

OPTIONAL EQUIPMENT

Semi-closed cabin
Closed soundproof cabin with heater
Air conditioning integrated under the cabin
Radiostereo CD
Adjustable steering column
Front protective grille
Load backrest
Electronic anti theft protection system
Homologated lighting equipment
Working light
5th auxiliary hydraulic service with quick coupling
Hydraulic quick coupling system (Universal SLL type or Euro)
4th auxiliary hydraulic service with continuous flow
Other tyres pattern available
FEM II forks carriage with or without integrated side-sift (TDL)
Bucket 4 in 1
Bucket 600 lt / Bucket 700 lt / Bucket 1.000 lt
Multiple attachments available proven and tested from factory

AUSA reserves the right to make any changes in the specifications without prior notice.