



**Samson 65.8 & 60.9**



65.8



60.9

## PERFORMANCE

	65.8	60.9
Maximum capacity (kg)	6.500	6.000
Maximum lifting height (m)	7,70	8,60
Maximum horizontal outreach (m)	4,20	4,90
Outreach at maximum height (m)	0,60	0,45
Fork swivelling angle	144°	144°
Pull-out force (daN)	5.700	5.700
Towing force (daN)	7.300	7.300
Maximum climb angle	40%	40%
Total weight empty (kg)	10.900	11.100
Max speed (km/h) (referred to wheels having the maximum allowable)	40	40

## BOOM

	65.8	60.9
Times: empty (in seconds)		
Lifting	14,23	14,89
Descent	9,39	9,82
Extension	7,50	8,66
Retraction	3,28	3,79
Forward swivelling	3,85	3,85
Reverse swivelling	2,57	2,57

Patented compensation system

## ENGINE

Iveco NEF  
93 Kw

Model:	Iveco NEF
Maximum power kW (hp):	93 (127)
Revolutions per minute (rpm):	2200
Operation:	4 stroke diesel
Injection:	Direct mechanical
Number and arrangement of cylinders:	4, vertical in line
Engine size (cm <sup>3</sup> ):	4485
Engine size (cm <sup>3</sup> ):	230
Specific consumption at 2200 rpm	Aftercooler Turbo compressor Liquid cooling system

## HYDRAULIC PLANT

Gear pump with capacity at max. speed (lt/1')	130
Max operational pressure (bar):	230
Optional	
Variable delivery pump (Load Sensing) (lt/1')	160
Max operational pressure (bar):	250
Distributor control with joystick:	4 in 1

## DIFFERENTIAL AXLES

Steering axles: 2, with planetary reduction gears
Steering types: 4 wheels / transversal / 2 wheels
Front axle: rigid (levelling upon request)
Back axle: oscillating
Oil bath service braking on the 4 wheels with double hydraulic plant and servo brake
Negative action parking brake

## REFUELLING (Litres)

Hydraulic plant (total)	160
Fuel tank	125

## OPTIONALS AND ACCESSORIES

A/C; Digital speedometer; Water Heater; Driver's seat with pneumatic suspension; Light on boom head; Quick coupling for accessories; Radio; Anti-theft system; Glass protection.  
(For additional customizations, contact the area dealer)

## TRANSMISSION

Hydrostatic transmission with variable displacement pump.  
Hydrostatic engine with automatic variation.  
Electrical - hydraulic inversion.  
Inching pedal for controlled advancement.  
Servocontrolled 2-speed gearbox.

## TRANSMISSION (for VS models)

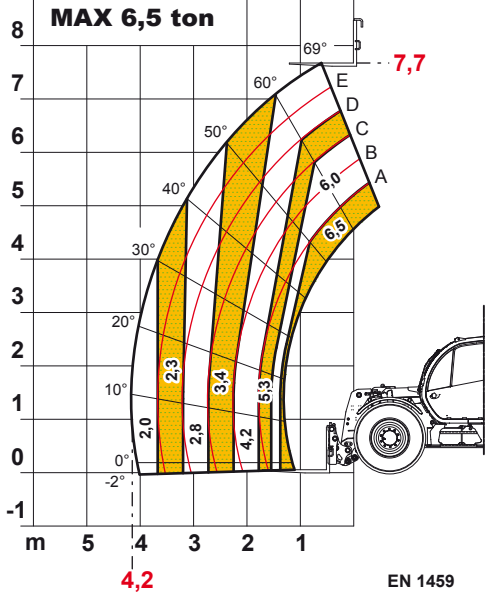
Vario System hydrostatic transmission.  
Electro-hydraulic reversing gear  
Drive Mode: Automotive / Loader / Creeper.  
Electronic inching pedal

## DEVICES AS PER STANDARD

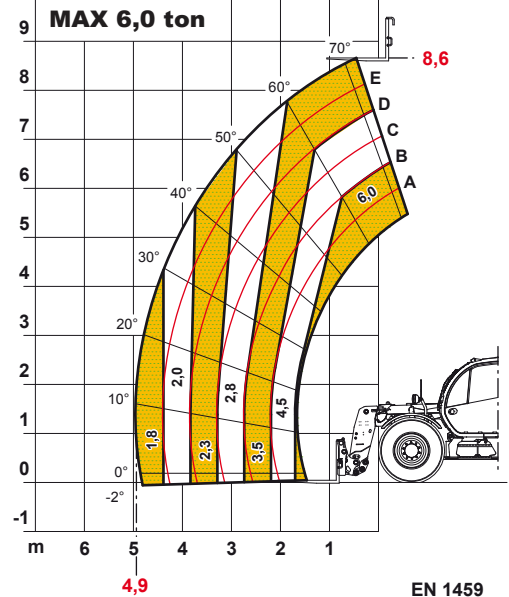
Anti-tipping device with pejorative movement block.  
Hydraulic socket for any accessories on the boom head.  
Soundproof closed cab, ROPS-FOPS approved, with heater.  
Self-blocking front axle differential (limited slip 45%).  
Electric window winder.

## TYRES

Tyres	18-22.5"
Alternative	17,5-25"



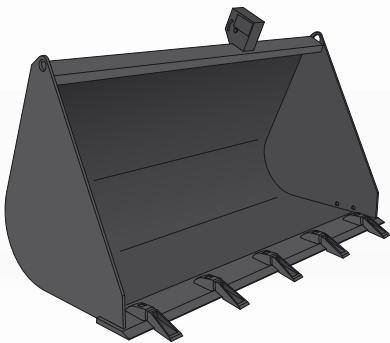
**Samson 65.8**



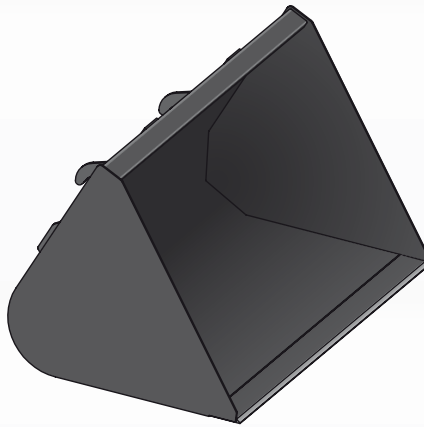
**Samson 60.9**

**Accessories and Attachments specific for any need**

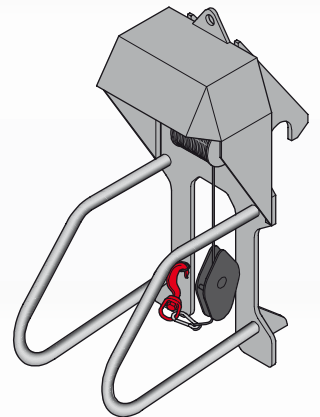
**Bucket with teeth**



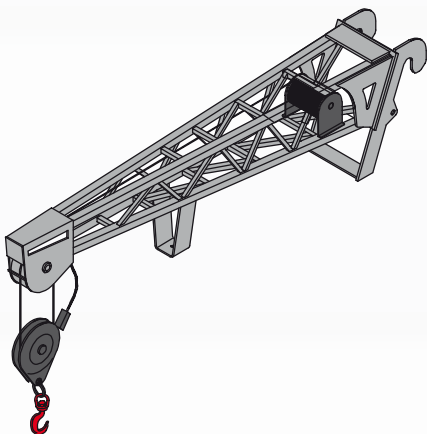
**Bucket for light materials**



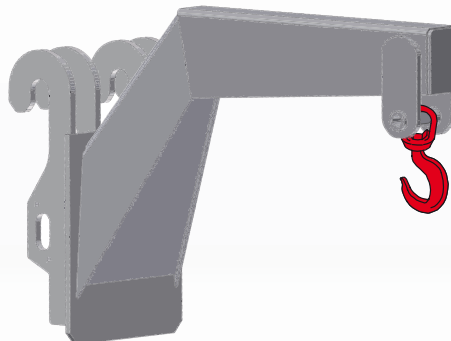
**Winch**



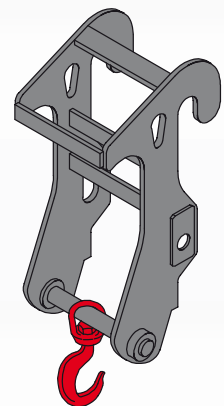
**Winch jib crane extension**



**Swan neck jib**



**Hook**



This is only a part of the many accessories and various equipment available for Dieci machines. For information about the entire range of accessories **CONTACT US** using contact information contained on the rear of the document.

## DIMENSIONS

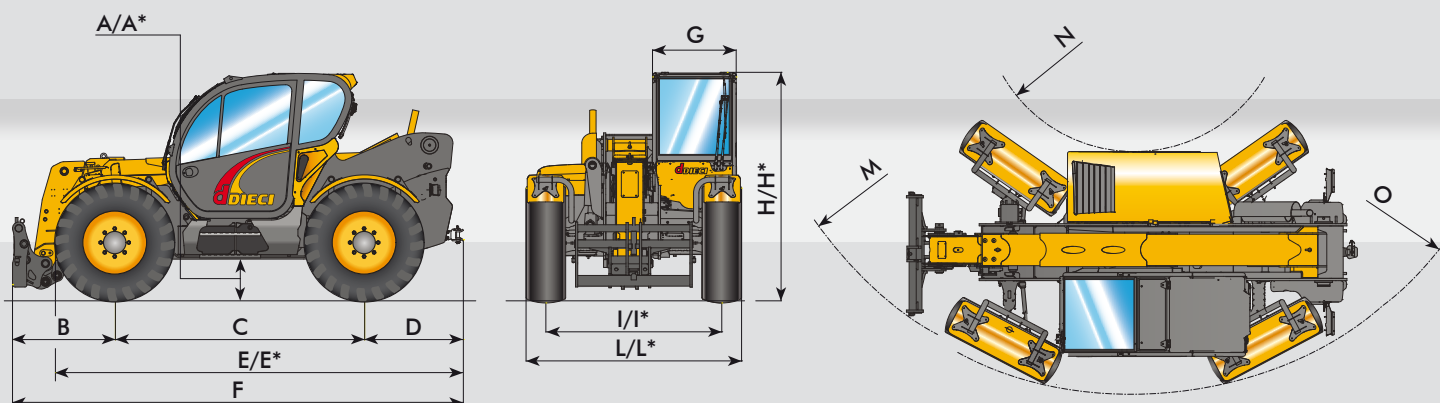
**65.8**

**60.9**

A/A*	395/470*	395/470*
B	1155	1510
C	2800	2800
D	1050	1050
E/E*	4435/4520*	4435/4520*
F	5005	5360
G	940	940
H/H*	2495/2570*	2495/2570*
I/I*	1920/1975*	1920/1975*
L/L*	2390/2420*	2390/2420*
M	4570	4550
N	1700	1700
O	4425	4400

Measurements expressed in millimetres

A\* - E\* - H\* = Measurements referring to optional wheels



A\* - E\* - H\* = Measurements referring to optional wheels



**d** **DIECI**  
macchine edili ed agricole

Via E. Majorana, 2-4 42027 Montecchio Emilia (RE) ITALY

Tel. +39 0522 869611 Fax +39 0522 869791 (comm. le Estero) Fax +39 0522 869604 (comm.le Italia)

[www.dieci.com](http://www.dieci.com) - E-mail: [info@dieci.com](mailto:info@dieci.com)