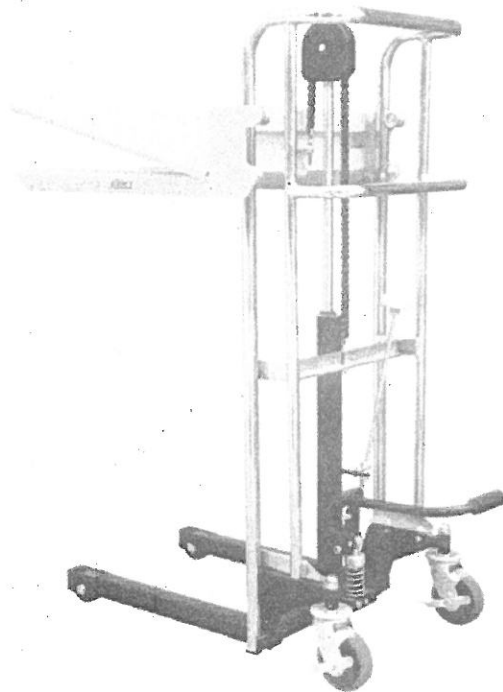


OPERATING INSTRUCTIONS

PARTS LIST



PS04 HAND PLATFORM STACKER

NOTE: OWNER AND OPERATOR MUST READ AND UNDERSTAND THIS OPERATING INSTRUCTIONS BEFORE USING THIS STACKER.

Thank you for using this platform stacker . The platform stacker is made of high quality steel, which was designed to be durable, reliable and easy-to-use. For your safety and correct operation, please carefully read this instruction before using it.

NOTE: All of the information reported herein is based on data available at the moment of printing. The factory reserves the right to modify its own products at any time without notice and incurring in any sanction. So, it is suggested to always verify possible updates.

1. WARNINGS:

- 1.1 Don't put your hands or feet under the platform
- 1.2 All unconcerned people should be away from the truck for more than 600MM while the goods are in the course of transporting or lifting.
- 1.3 Do not move the stacker when the forks are lifting, do not move the stacker unless fork are lowered to a safety position when the stacker has been loaded, injury could happen if the goods fall down.
- 1.4 Do not put the foot in front of the swivel wheel, injury could happen when the goods lowering.
- 1.5 Don't overload
- 1.6 Pay your attention to the level of surface of the road while moving, in case the falling of goods.
- 1.7 Don't work on the slope
- 1.8 Do not lift persons. People could fall down and suffer severe injury.

2 CAUTION:

- 1.1 Operator should read the instructions before using this truck to avoid any injury by wrong operation.
- 1.2 This platform stacker is used to lift or lower the loads within its rated capacity, which can not be used as other function.
- 1.3 Do not operate it unless you are familiar with it and have been trained or authorized to do so
- 1.4 Don't lower the loads at a fast speed, in case any injury could happen
- 1.5 Please pay more attention to the position of loads. When the goods is not steady, please stop working
- 1.6 When the loads is going to move on the table or forks or fall down, please brake the platform stacker immediately
- 1.7 The weight of goods should be distributed on the two forks evenly, do not use one single fork. The center of gravity of goods should be in the center of two forks
- 1.8 Do not load platform stacker with unstable, unbalanced loosely goods.
- 1.9 Practice maintenance work according to service instructions
- 1.10 Do not modify or repair platform stacker without manufactures written consent
- 1.11 Remove loaded goods from platform stacker and use safety stopper to prevent platform stacker from lowering when servicing it.
- 1.12 This truck is not designed to be water resistant. If not using, please put it under a dry condition and keep the forks in the lowest position.

3. DAILY INSPECTION

Daily inspection is effective to find the malfunction or fault on platform stacker. Check platform stacker on the following points before operation.

- 3.1 Check if there is any scratch, bending or cracking on the platform stacker.
- 3.2 Check if there is any oil leakage from the cylinder.
- 3.3 Check the subside of stacker while it is lifted to the highest position.

3.4 Check if the movement of the wheel is smooth

3.5 Check the function of brake

3.6 Check if all the bolts nuts are tightened firmly

CAUTION: DO NOT use platform stacker if any malfunction or fault it found.

4. OPERATING

4.1 How to use the brake

CAUTION

Brake it when not moving it in order to prevent injury

The brake is equipped on the left side of the swivel caster

- 1) To brake it , press the brake pedal .
- 2) To release the brake, lift up the brake pedal

4.2 Lifting and lower the forks

WARNING

1. DO NOT overload platform stacker. Stay within its rated capacity

DO NOT side or end load . Load must be distributed on at least 80% of table area. If transport of stow the goods with forks, please take the table away from the forks

Press the lifting pedal several times until the table reaches the desired position. The table does not elevate after reaching the highest position even if the lifting pedal is pressed. The platform stacker could lower slightly after reaching the highest position.

4.3 Lowering the stacker

WARNING

Don't put any part of the body under the platform or forks

Turn the knob counter-clockwise then the platform stacker will decrease.

5. Specifications

Capacity (kg)	Table Dimensions (Mm)	Fork Height(mm) Min /Max	Rear roller(mm)	Front roller(mm)	Weight (Kg)
400	650*576	85-850	Φ127	Φ75	75
400	650*576	85-1200	Φ127	Φ75	81
400	650*576	85-1500	Φ127	Φ75	91

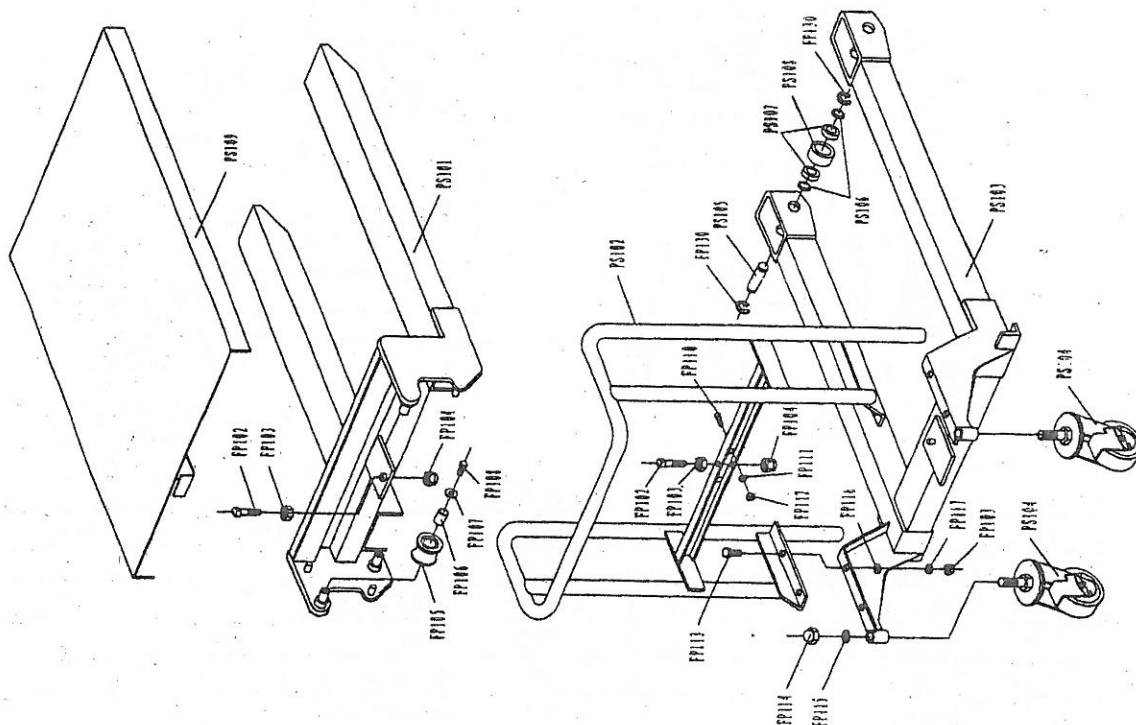
6. Maintenance

6.1 Lubricate each point described below every month:

6.2 Change hydraulic oil every 12 months.

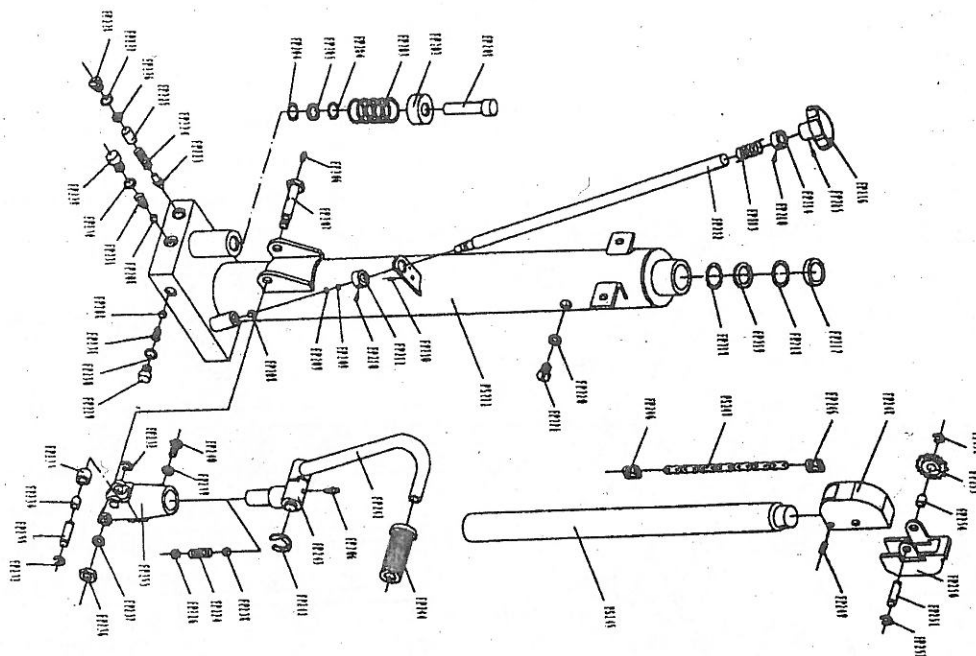
Lubricating Points

- 1) Axle and bearing of wheels---- Grease
- 2) Link and axles---Grease
- 3) The point where the foot pedal linked to the truck---Grease
- 4) Chain roller---Grease
- 5) Grease nipple---Grease



7. List of Mast

No.	Description	Qty.	No.	Description	Qty.
PS101	Forks	1	FP114	Nut	2
FP102	Chain rod	2	FP115	Locking Washer	2
FP103	Hexangular Nut	6	FP116	Washer	4
FP104	Locking Nut	2	FP117	Elastic Washer	4
FP105	Roller	4	PS103	Mast Base	1
FP106	Bushing	4	PS104	Swivel wheel	2
FP107	Big Washer	4	FP130	Retaining ring	4
FP108	Hexangular Bolt	4	PS105	Shaft of roller	2
PS102	Bar	4	PS106	Washer	4
FP110	Bolt	2	PS107	Bearing	4
FP111	Washer	2	PS108	Front wheel	2
FP112	Hexangular Nut	2	PS109	Table	1
FP113	Hexangular Bolt	4			



8. List of Mast

No.	Description	Qty.	No.	Description	Qty.
FP201	Pump piston rod	1	FP229	Screw	2
FP202	Cap of spring	1	FP230	Seal Washer	2
FP203	Spring	1	FP231	Spring	2
FP204	O-ring	2	FP232	Retaining ring	2
FP205	Washer	1	FP233	Pressure roller	1
FP206	Oil-holder	2	FP234	Bushing	1
FP207	Shaft of bracket	1	FP235	Shaft	1
FP208	Steel Ball	3	FP236	Nut	1
FP209	O-ring	2	FP237	Elastic Washer	1
FP210	Bolt	4	FP238	Steel Ball	1
FP211	Fixing sleeve	1	FP239	Nut	1
FP212	Strike pin	1	FP240	Bolt	1
FP213	Spring	1	FP241	Retaining ring	1
FP214	Fixing Sleeve	1	FP242	Foot pedal	1
FP215	Bolt	1	FP243	Seat of pedal	1
FP216	Screw handle	1	FP244	Rubber sleeve	1
FP217	Dust Ring	1	PS245	Piston rod	1
FP218	O-ring	2	FP246	Joint of chain	2
FP219	Washer	1	PS247	Chain	1
FP220	Seal Washer	1	FP248	Chain cover	1
FP221	Hexangular Bolt	1	FP249	Bolt	1
PS222	Pump Body	1	FP250	Cap	1
FP223	Spindle of pumping valve	1	FP251	Shaft	1
FP224	Spring	2	FP252	Retaining ring	2
FP225	Pin	1	FP253	Chain gear	1
FP226	Adjusting Bolt	2	FP254	Bushing	2
FP227	O-ring	1	FP255	Bracket	1
FP228	Adjusting Bolt	1			