

Art: 53250

**WARNING**

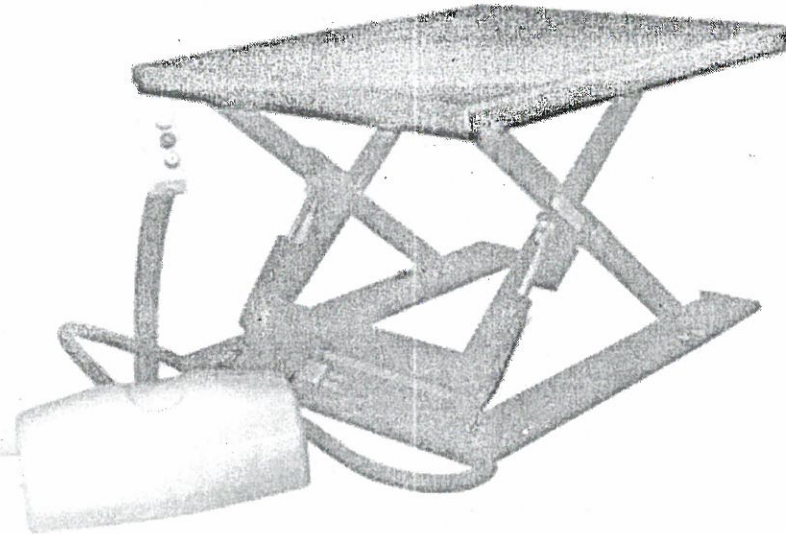


Do not use the stacker before reading and understanding these operating instructions.

**NOTE!**

Keep for future reference.

ISO9001  
ISO14001



**Operating Instructions / Parts List**  
**HTF-G ELECTRIC PLATFORM**

**ATTENTION:**

1. Environmentally hazardous waste, such as batteries and electronics, will have a negative effect on the environment, or health, if handled incorrectly.
2. The waste packages should be sorted and put into solid dustbins according to the materials and be collected disposal by local special environment protection bureau. To avoid pollution, it's forbidden to throw away the wastes randomly.
3. To avoid leaking during the use of the products, the user should prepare some absorbable materials (scraps of wooden or dry duster cloth) to absorb the leaking oil in time. To avoid second pollution to the environment, the used absorbable materials should be handed in to special departments in terms of local authorities.

**NOTE: All of the information reported herein is based on data available at the moment of printing. We reserve the right to modify our own products at any moment without notice in any sanctions. There fore, it is suggested to always verify possible updates and change liability.**

Thank you for using our electrical lift table. This lift table is made of high quality steel and is designed to give a durable, reliable and easy to use function. For your safety and correct operation, please carefully read these instructions and warnings on the lift table before using it.

## 1. SPECIFICATIONS

Capacity	kg	1000
Lifting height	mm	840
Min.height	mm	80~85
Dimension of the table	mm	Length 1450 * Width 1140
Lifting speed	S	18
Lower speed	S	15
Pump electric current	L/min	3
Oil tank	L	3
Pump station		AC3x380V, 750W
Net Weight	Kg	250

## 2. SAFETY GUIDANCE

- 2.1 Operator should read all warning signs on the truck and instructions here before using it.
- 2.2 Do not put foot and hand under the scissors, or injury could happen.
- 2.3 Do not go under table.
- 2.4 Do not overload.
- 2.5 Do not use it on slope, or lift table may become uncontrollable and create danger.
- 2.6 Do not lift people. Or People could fall down and suffer severe injury.
- 2.7 Do not side or end load. Load must be distributed on at least 80% of the table area.
- 2.8 The table should be maintained by the professional operator
- 2.9 Keep watching the condition of load, stop operating lift table if load becomes unstable.
- 2.10 Check and maintain the lift table regularly.
- 2.11 Do not use the lift table continuously, the pump station would be damaged.
- 2.12 Stop operating the lift table if the temperature of the oil is too high.
- 2.13 The table should be lowered to the lowest position if the lift table is not in use.

## 3. CONTROL PANEL

Four switches

### 3.1 Emergency switch

When you press down this switch, it will switch off the power, and then you turn it clockwise, it will switch on the power.

### 3.2 Lifting switch

When you press down this switch, the table will lift; when you move your hand, the table will stop lifting.

### 3.3 Lowering switch

When you press down this switch, the table will be lowering; when you move your hand, the table will stop lowering.

### 3.4 Replacement switch

**NOTE: The table can not lower when the switch of safety protection frame starts.** If you want lower the table at this time, you must:

**First:** press down the Lifting switch, let the table to be lifted a little;

**Then:** press down the Lowering switch. Now, the table is lowering.

## 4. MAINTENCE

### 4.1 Hydraulic oil

Please check the oil level every six months. The oil can be hydraulic oil: ISO VG 32 (GB11118-89), its viscosity should be 32cSt at 40°C, total volume is about 4.0lt.

### 4.2 Daily check and maintenance

It is necessary to check daily. Special attention should be paid to the rollers, the axles, as thread, rags, etc., it may block the rollers; the scissors and the table should be checked, they may be deformed; the forks should be unloaded and lowered in the lowest position when the job is over.

### 4.3 Lubrication

Use motor oil or grease to lubricate all movable parts.

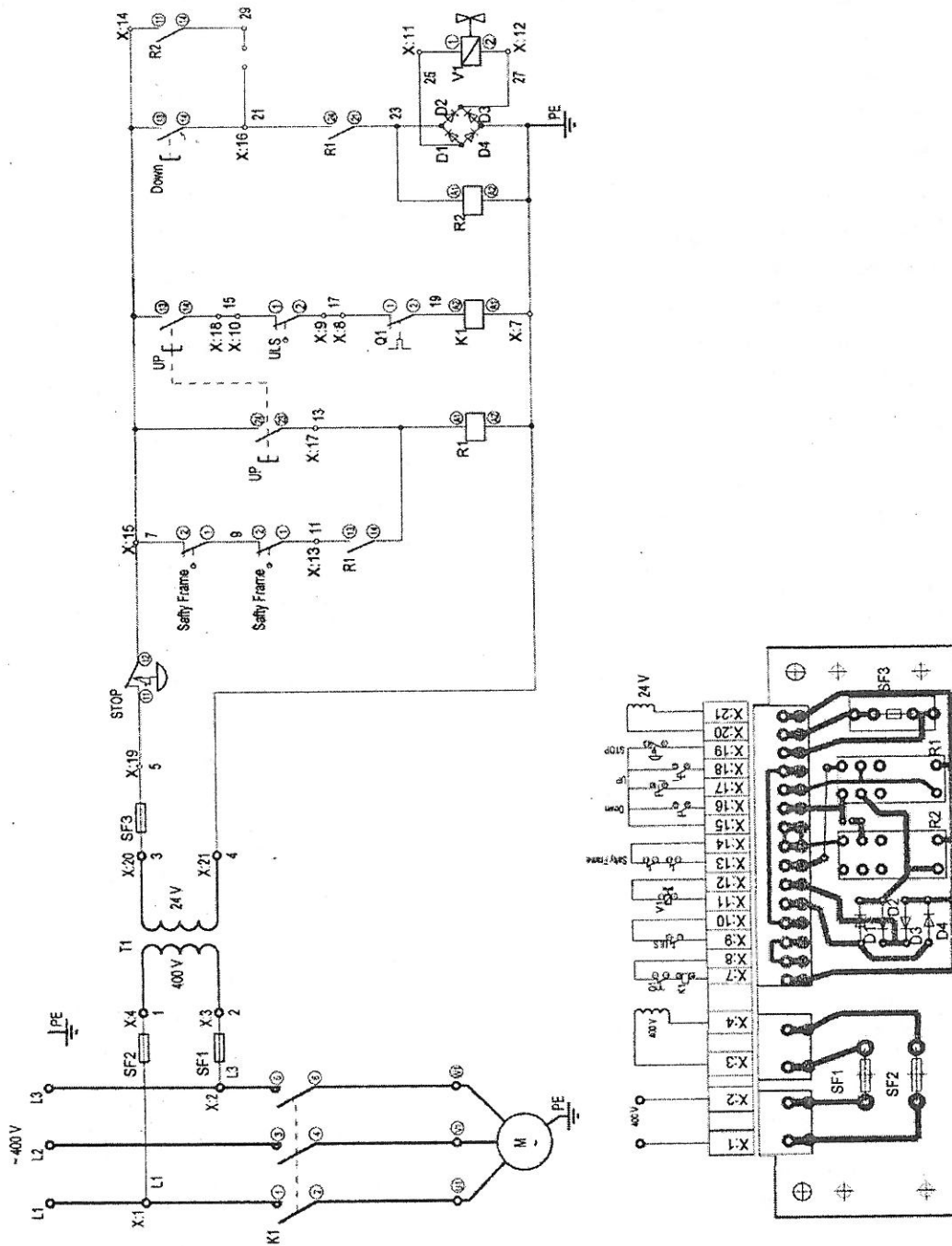
## 5. TROUBLES SHOOTING

No	TROUBLE	CLAUSE	FIXING METHODS
1	The table can not be lifted up to the Max. height	<ul style="list-style-type: none"> <li>● The hydraulic oil is not enough</li> <li>● The position of the travel switch is wrong.</li> </ul>	<ul style="list-style-type: none"> <li>● Fill up with oil</li> <li>● Adjust the position of travel switch</li> </ul>
2	The table can not lift	<ul style="list-style-type: none"> <li>● Without hydraulic oil</li> <li>● Electromagnetic valve can not work</li> </ul>	<ul style="list-style-type: none"> <li>● Fill up with oil</li> <li>● Change the electromagnetic valve</li> </ul>
3	The motor can not run	<ul style="list-style-type: none"> <li>● The emergency switch is off.</li> <li>● The connection of electrical wire is loose</li> <li>● The contactor of DC motor is damaged</li> </ul>	<ul style="list-style-type: none"> <li>● Turn the emergency switch clockwise</li> <li>● Tighten it</li> <li>● Replace it with a new one</li> </ul>
4	The forks can not descend	<ul style="list-style-type: none"> <li>● The piston rod or mast is deformed resulting from partial loading slanting to one side or over-loading</li> <li>● The fork was kept in the high position for long time, which causes piston rod bared to arise in rusting and jamming of the rod</li> <li>● The release valve of pump cannot work because of abrasion</li> </ul>	<ul style="list-style-type: none"> <li>● Replace with a new one</li> <li>● Keep the forks in the lowest position if not using, and pay more attention to lubricate the piston rod</li> <li>● Replace with a new one.</li> </ul>
5	Leaks	<ul style="list-style-type: none"> <li>● Sealing parts worn or damaged</li> <li>● Some parts cracked.</li> </ul>	<ul style="list-style-type: none"> <li>● Replace with new ones.</li> <li>● Replace with new ones</li> </ul>
6	The fork descends without the release valve worked	<ul style="list-style-type: none"> <li>● The impurities in the oil makes the release valve unable to close tight</li> <li>● Sealing parts worn or damaged</li> <li>● The release valve is damaged</li> </ul>	<ul style="list-style-type: none"> <li>● Replace the oil</li> <li>● Replace with new ones</li> <li>● Replace with new a one.</li> </ul>

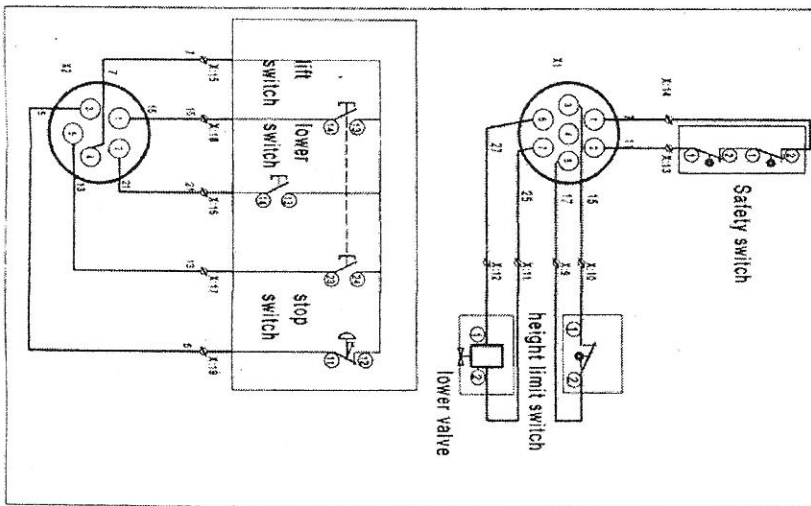
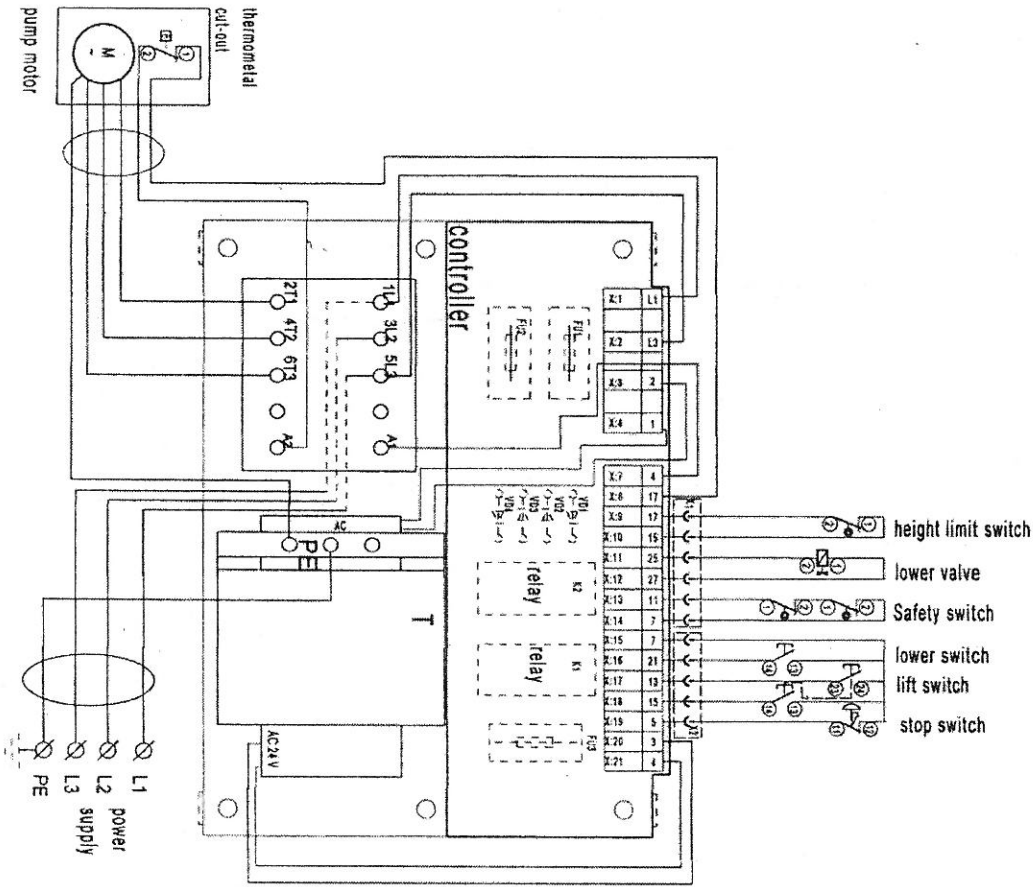
**NOTE: Do not attempt to repair the truck unless you are trained and authorized.**

## 6. ELECTRICAL SYSTEM

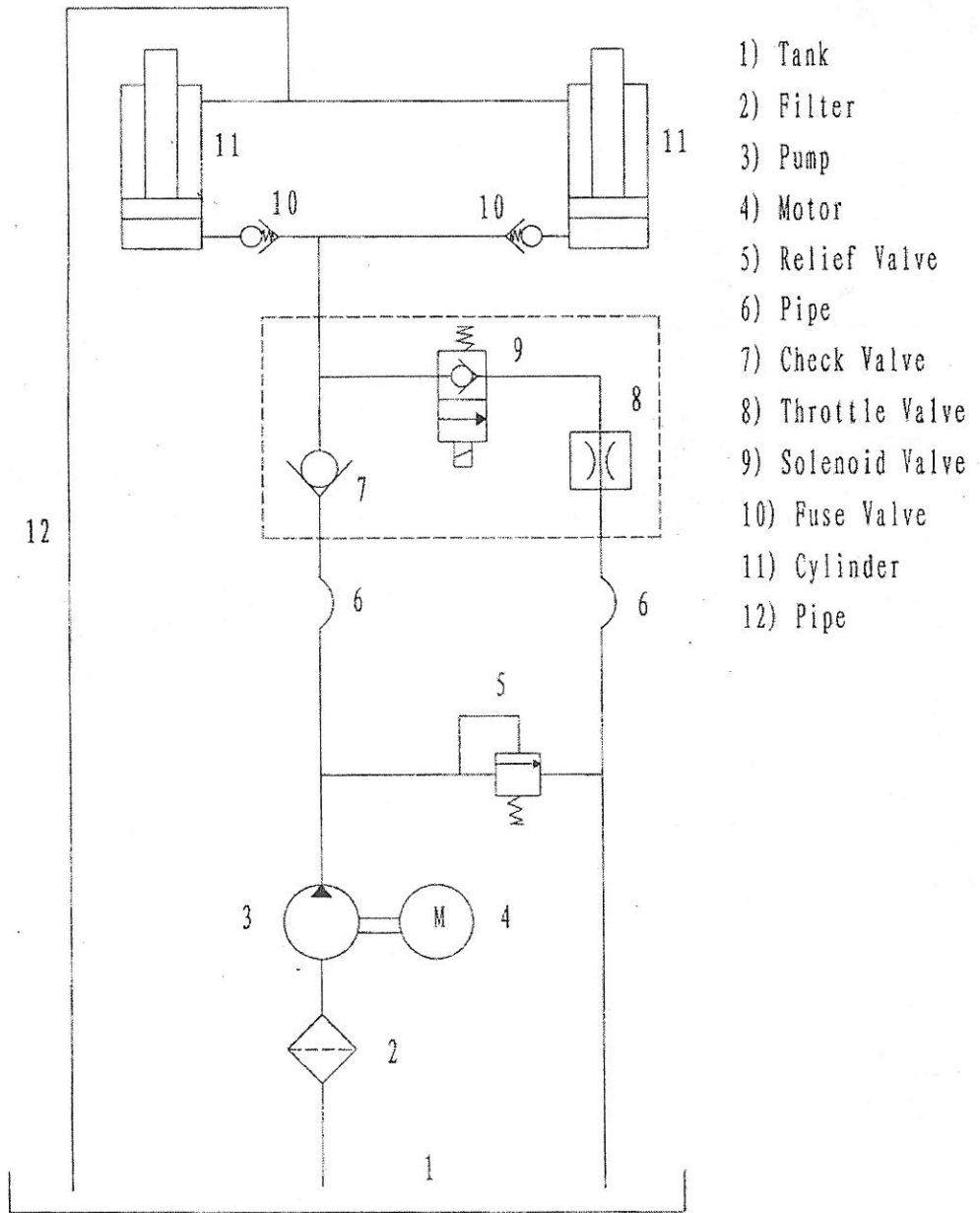
### 6.1 CIRCUIT DIAGRAM



## 6.2 CONNECTION DIAGRAM

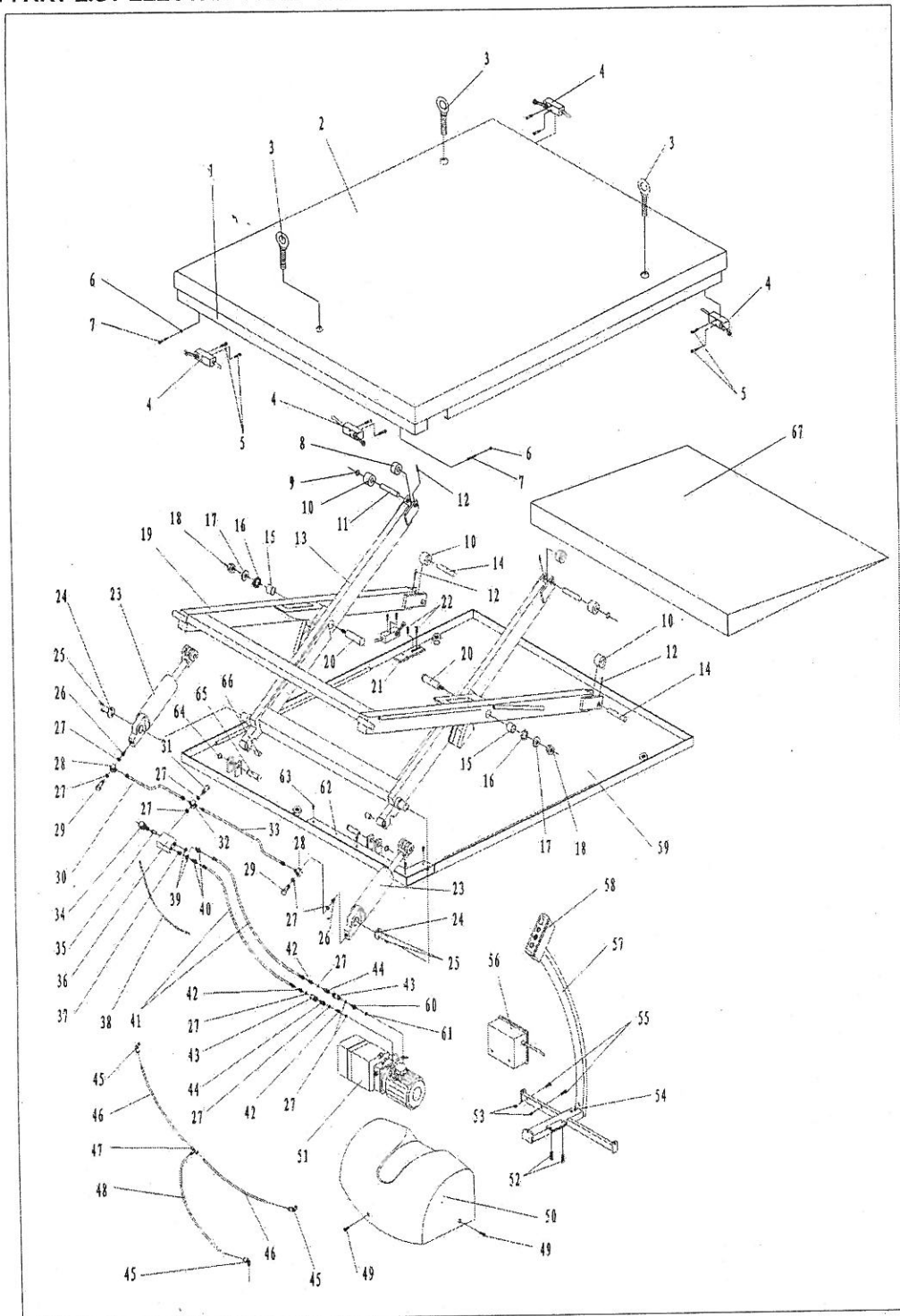


## 7. Hydraulic System



## 8. Parts List

### 8.1 PART LIST ELECTRIC PLATFORM





**PART LIST ELECTRIC PLATFORM**

No	Description	Qty.	No	Description	Qty.
1	Safety Border	1	36	Valve Plank	1
2	Table	1	37	unilateralism Valve	1
3	Bolt	3	38	cable	
4	Microswitch	4	39	Seal Washer	3
5	Bolt	8	40	Nipples M-M1/4-3/8	2
6	Nut	2	41	1/4 L=3000 pipe	2
7	Bolt	2	42	Nipples M1/4	3
8	Roller	2	43	Celerity tie-in	2
9	Retaining Ring	2	44	Celerity tie-in	2
10	Roller	4	45	curve	3
11	Shaft	2	46	pipe	2
12	Elastic Pin	4	47	Joint	1
13	Inside Fork Arm	1	48	pipe	1
14	Shaft	2	49	Bolt	3
15	Bushing	2	50	hood	1
16	Washer	2	51	pump	1
17	Washer	2	52	Bolt	2
18	Nut	2	53	Nut	2
19	Outside Fork Arm	1	54	Bolt	2
20	Shaft	2	55	Bolt	2
21	Connect Plank	1	56	chopper	1
22	Bolt	2	57	bracket	1
23	Cylinder	2	58	Control switch	1
24	Washer	2	59	Bottom plank	1
25	Bolt	4	60	Nipples M-M1/4-3/4	1
26	Safety Valve	2	61	O-Ring	1
27	Seal Washer	11	62	Cover board	1
28	Square Joint	2	63	screw	4
29	Bolt	2	64	Retaining Ring	2
30	pipe	1	65	Shaft	2
31	Bolt	1	66	Bushing	4
32	Joint	1	67	Slope	1
33	pipe	1			
34	Electromagnetism Valve	1			
35	throttle Valve	1			