

WARNING



Do not use the stacker before reading and understanding this operating instructions.

NOTE!

Keep for future reference.

ISO9001

ISO14001



Operating Instructions / Parts List

TF15

ATTENTION:

1. The waste packages should be sorted and put into solid dustbins according to the materials and be collected disposal by local special environment protection bureau. To avoid pollution, it's forbidden to throw away the wastes randomly.
2. To avoid leaking during the use of the products, the user should prepare some absorbable materials (scraps of wooden or dry duster cloth) to absorb the leaking oil in time. To avoid second pollution to the environment, the used absorbable materials should be handed in to special departments in terms of local authorities.

Thank you for using this lift table. Your lift table is made of high quality steel and is designed for the horizontal lifting and transport of loads on a level, fixed base. For your safety and correct operation, please carefully read this instruction before using it and keep it on file for future reference.

NOTE: All of the information reported herein is based on data available at the moment of printing. We reserves the right to modify our own products at any moment without notice and incurring in any sanction. So, it is suggested to always verify possible updates.

1. WARNINGS

1. DO NOT put foot or hand in scissors mechanism.
2. DO NOT allow other person to stand in front or behind lift table when it is moving.
3. DO NOT move lift table when table is in raised position. Load could fall down.
4. DO NOT enter under table.
5. DO NOT overload lift table.
6. DO NOT put foot in front of rolling wheels, Injury could fall down.
7. WATCH difference of floor level when moving lift table. Load could fall down.
8. DO NOT use lift table on slope or inclined surface, lift table may become uncontrollable and create danger.
9. DO NOT lift people. People could fall down and suffer severe injury.

2. CAUTION

1. Read this operation manual carefully and understand completely operating lift table. Improper operation could create danger.
2. This lift table is a movable lifter designed to lift or lower rated load on table. DO NOT use lift table for other purpose than its intended use.
3. DO NOT allow person to operate lift table that dose not understand its operation.
4. DO NOT lower table too fast. Load could fall down and create danger.
5. KEEP watching the condition of load. Stop operating lift table if load becomes unstable.
6. Braking lift table when sliding load on or off table.
7. DO NOT side or end load. Load must be distributed on at least 80% of table area.
8. DO NOT use lift table with unstable, unbalanced loosely load.
9. Practice maintenance work according to service instructions.
10. DO NOT modify lift table without manufacturers written consent.
11. REMOVE load from table and use safety stopper to prevent table from lowering when servicing lift table.
12. This lift table is not designed to be water resistant. Use lift table under dry condition.

3. DAILY INSPECTION

Daily inspection is effective to find the malfunction or fault on lift table. Check lift table on the following

points before operation .

- (1) Check for scratch, bending or cracking on the lift table.
- (2) Check if there is any oil leakage from the cylinder.
- (3) Check the vertical creep of the table.
- (4) Check the smooth movement of the wheels.
- (5) Check the function of brake.
- (6) Check if all the bolts and nuts are tightened firmly.

CAUTION: DO NOT use lift table if any malfunction or fault is found.

4. OPERATING LIFT TABLE

4-1. How to use the brake.

CAUTION
Brake lift when not moving it in order to prevent sudden movement.

The brake is equipped with the swivel caster on the right side.

- (1) Brake the wheel, press the brake pedal.
- (2) Release the brake, lift up the brake pedal.

4-2. Lifting the table

WARNING
1. DO NOT overload lift table. Stay within its rated capacity.
2. DO NOT side or end. Load must be distributed on at least 80% of table area.

Press the lifting pedal several times until the table reaches the desired position. The table does not elevate after reaching the highest position even if the lifting pedal is pressed. The table lowers slightly after reaching the highest position. **MAXIMUM CAPACITY OF TABLE is 150kg.**

NOTE:

The hydraulic cylinder is designed to hold table. As is the nature of hydraulic system, table lowers very slowly over an extended period of time. Please note the table does not stay at the same position indefinitely.

4-3. Lowering table

WARNING
DO NOT put foot or hand in scissors mechanism

- Knob rotating makes table down..
- Pull the control handle make table down..

5. Specifications

Model	Capacity (kg)	Table (Mm)	Table Height (mm)	Wheel (Mm)	Weight (Kg)
TF15	150	700x450	220-720	100	45

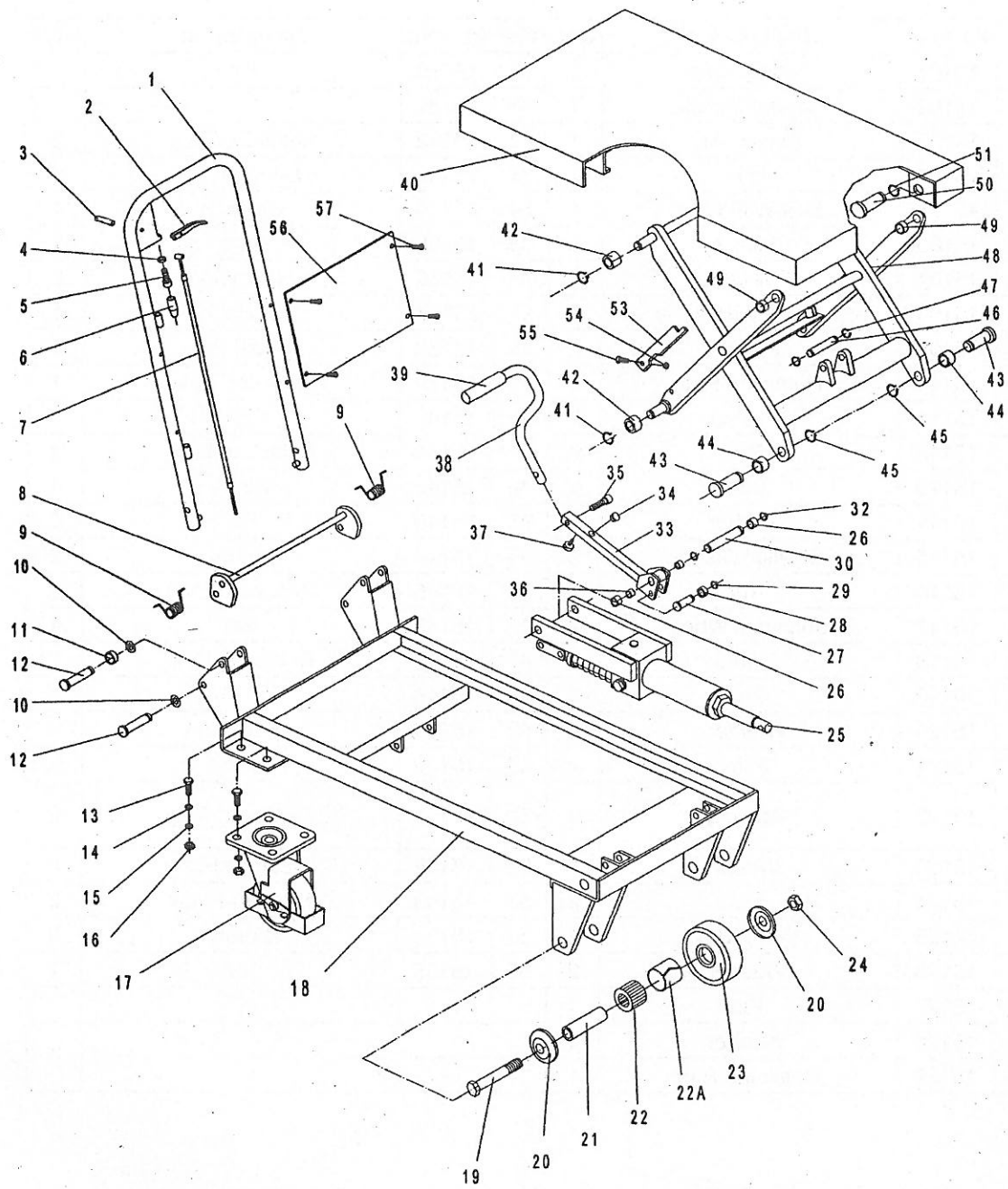
6. Service Instructions

6-1. Lubricate each point described below every month:

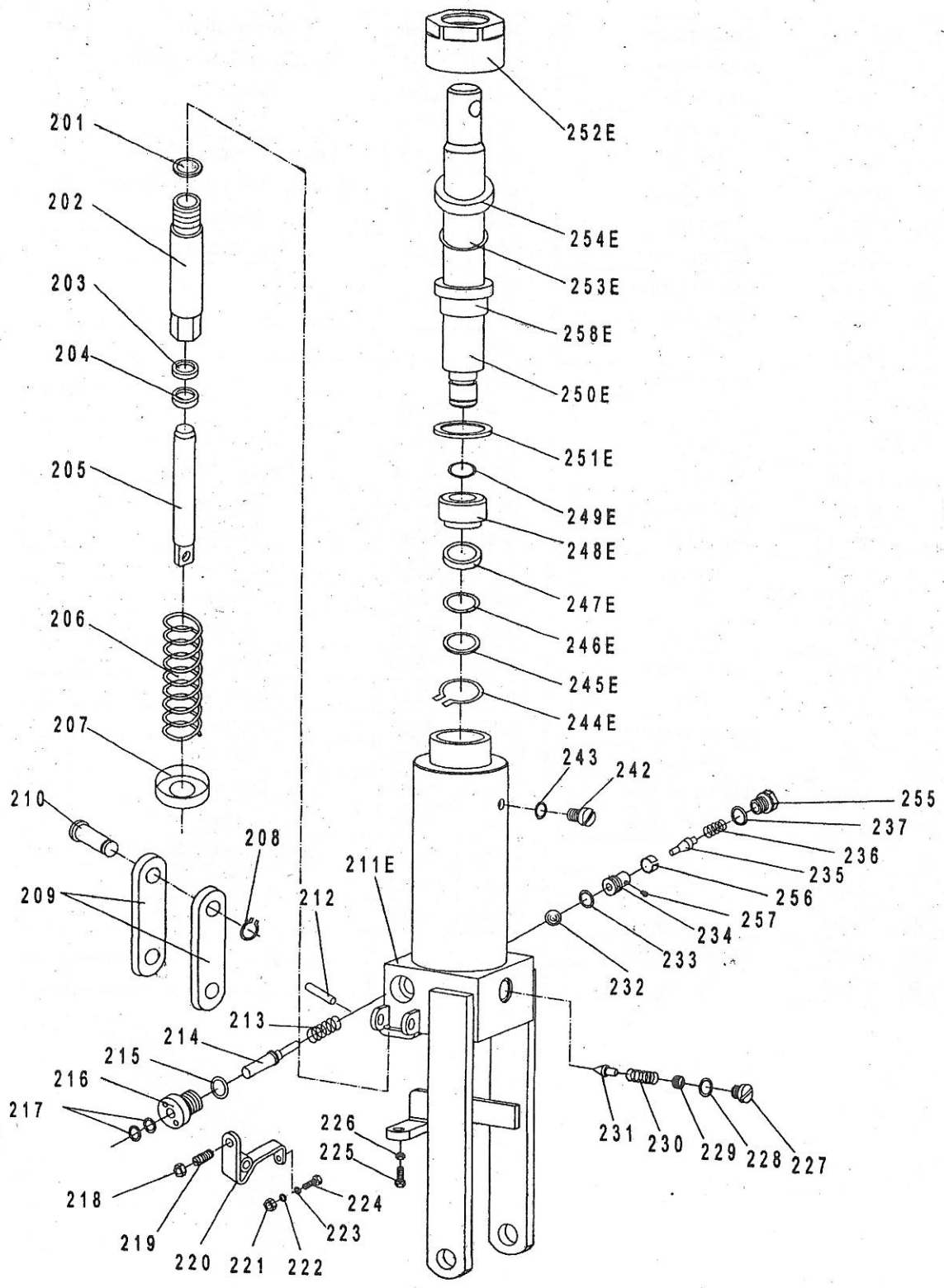
6-2. Change hydraulic oil every 12 months.

Lubricating Points

- (1) Fitting of cylinder---Oil
- (2) Roller friction surface---Grease
- (3) Link pin ---Oil
- (4) Pedal fitting point---Oil
- (5) Grease nipple---Grease



No	Part No	Description	Qty.	No	Part No	Description	Qty.
1	15101	Handle Grip	1	30	15130	Pin	1
2	15102	Control Handle	1	31	15131		
3	15103	Elastic Pin	1	32	15132	Retaining Ring	2
4	15104	Nut	1	33	15133	Connecting	1
5	15105	Bolt With Hole	1	34	15134	Cushion	1
6	15106	Jacket	1	35	15135	Bolt	1
7	15107	Pull Line	1	36	15136	Bushing	2
8	15108	Long Shaft	1	37	15137	Cushion	1
9	15109	Spring	2	38	15138	Pedal Bar	1
10	15110	Retaining Ring	4	39	15139	Protecting Cover	1
11	15111	Washer	2	40	15140	Table	1
12	15112	Pin	4	41	15141	Retaining Ring	4
13	15113	Bolt	8	42	15142	Roller	4
14	15114	Washer	8	43	15143	Pin	2
15	15115	Elastic Washer	8	44	15144	Bushing	2
16	15116	Nut	8	45	15145	Retaining Ring	2
17	15117	Universal Wheel	2	46	15146	Pin	1
18	15118	Frame	1	47	15147	Retaining Ring	2
19	15119	Bolt	2	48	15148	Fork Arm	1
20	15120	Washer	4	49	15149	Bushing	2
21	15121	Axle	2	50	15150	Pin	2
22, 22A	15122	Bearing	4	51	15151	Retaining Ring	2
23	15123	Wheel	2	52	15152	Elastic Pin	2
24	15124	Nut	2	53	15153	Support Plank	2
25	15125	Pump Unit	1	54	15154	Screw	2
26	15126	Washer	2	55	15155	Nut	2
27	15127	Pin	1				
28	15128	Washer	1				
29	15129	Retaining Ring	1				



No.	Part No	Description	Qty.	No.	Part No	Description	Qty.
201	15201	Seal Washer	1	231	15231	Spindle of Safety Valve	1
202	15202	Pump Cylinder	1	232	15232	Steel Ball	1
203	15203	Dust Ring	1	233	15233	O-Ring	1
204	15204	Y-Seal	1	234	15234	Seat of Pumping Valve	1
205	15205	Pump Piston	1	235	15235	Spindle of Pumping Valve	1
206	15206	Spring	1	236	15236	Spring	1
207	15207	Spring Cap	1	237	15237	Seal Washer	1
208	15208	Retaining Ring	1	238			
209	15209	Joint Plate	2	239			
210	15210	Pin	1	240			
211E	15211	Pump Body	1	241			
212	15212	Elastic Pin	1	242	15242	Bolt	1
213	15213	Spring	1	243	15243	Seal Washer	1
214	15214	Strike Pin	1	244E	15244	Retaining Ring	1
215	15215	Seal Washer	1	245E	15245	Washer	1
216	15216	Axle Sleeve	1	246E	15246	O-Ring	1
217	15217	O-Ring	2	247E	15247	Cup Packing	1
218	15218	Nut	1	248E	25248	Piston	1
219	15219	Screw	1	249E	15249	O-Ring	1
220	15220	Lever Plate	1	250E	15250	Piston Rod	1
221	15221	Nut	1	251E	15251	Seal Washer	1
222	15222	Elastic Washer	1	252E	15252	Cylinder Cap	1
223	15223	Washer	1	253E	15253	O-Ring	1
224	15224	Bolt With Hole	1	254E	15254	Dust Ring	1
225	15225	Bolt With Hole		255	15255	Plug	1
226	15226	Nut	1	256	15256	Liquid Throttle Sheath	1
227	15227	Plug	1	257	15257	Bolt	1
228	15228	O-Ring	1	258E	15258	Sleeve	1
229	15229	Adjusting Bolt	1				
230	15230	Spring	1				