

All Rights Reserved

Materials and specifications are subject to change without notice.  
Featured machines in photos may include additional equipment. See your XCMG dealer for available options.



**XCMG FIRE-FIGHTING SAFETY EQUIPMENT CO., LTD.**  
Address: No. 17 Zhujiang East Road, High-tech Industrial Development Zone,  
Xuzhou City, Jiangsu Province, China 221116  
Tel: +86(0)516 879 83988  
E-Mail: [xgxfgh@xcmg.com](mailto:xgxfgh@xcmg.com)

[www.xcmg.com](http://www.xcmg.com)



# XT2506E

TELEHANDLERS



MAX. LIFTING HEIGHT 5.85m

MAX. LIFTING CAPACITY 2500kg

BATTERY SPECIFICATION 307.2V/160AH ( standard )  
307.2V/228AH ( optional )







## XCMG

Founded in 1943 as Huaxing Factory, XCMG is a pioneer, founder, and leader in China's construction machinery industry. Our global team works together to develop our unique competitive edge and strengthen our global influence, achieving a market value exceeding 100 billion RMB and ranking among the world's leading brands.

XCMG consistently leads in domestic industry indicators, has maintained a global leadership position for many years, and is listed in the "World's 500 Most Influential Brands." We are also included in the Fortune China 500 and Forbes China's Top 30 Go-International Brands. These achievements cement our leadership in the domestic industry.

XCMG leads the global market in cranes and piling machinery, with over 10 major product categories continuing leading the global market, and 16 categories holding the No. 1 position in China. Our new energy heavy trucks are also seeing strong sales across the globe.

XCMG has established a modern industrial system of "5+1+1," covering construction machinery, mining machinery, agricultural machinery, sanitation machinery, emergency rescue equipment, commercial trucks, and the modern service industry. Our products are sold to over 190 countries and regions, with coverage of the Belt and Road Initiative countries exceeding 95%, solidifying our role as a key player in China's global equipment manufacturing industry.

XCMG is one of the earliest enterprises in China to develop telehandlers. Benefiting from its profound technical expertise, the company's products are known for their excellent performance, maturity, reliability, and a wide range of models. Currently, XCMG has established three major categories: agricultural, construction, and heavy-duty models. The product line covers heights ranging from 6 to 18 meters and load capacities from 2.5 to 23 tons, offering advantages such as safety, efficiency, strong adaptability to various scenarios, and ease of maintenance. The products meet certification standards for Europe, North America, and other regions, and are exported to overseas markets including Europe, North America, Central and South America, Southeast Asia, and Central Asia.





## Product Features

### 01 Strong Power

The industry's **first 300V platform-compact telescopic handler**, featuring strong power output, can handle various complex working conditions. The maximum traveling speed can reach **24.9 km/h**, leading in industry at same level.

### 03 Quick-Change Mechanism

The **standard quick-change mechanism** can achieve the fast change of various attachments for efficient change.

### 02 Safe and Reliable

**Standard-equipped anti-rollover system** ensures safer operation. **CAN-Bus power management** ensures higher reliability and lower maintenance cost.

### 04 Three Charging Modes

Industrial **380V AC** charging, charging via an **Euro standard AC** charger slow and fast charging via an **Euro standard DC** charger.



### 05 Battery Capacity Multiple Configurations

★The standard battery capacity is **49 kwh** and the optional battery capacity is **70 kwh**, meeting the working time requirement of **8 hours** and **12 hours** respectively.





## Product Features

### 01 Cab Upgrade

The cab is certificated with **FOPS & ROPS** and its interior adopts **ABS** thermoforming process, ensuring an aesthetic design.



### 02 New Exterior Design

The vehicle adopts a **new-generation exterior styling**, equipped with electric rearview mirrors, a four-way steering rack, a follow-up armrest, a phone holder, etc.



### 03 Strong Terrain Adaptability

**Herringbone-pattern off-road tires** provide excellent mud-shedding efficiency and superior off-road traction.

**Full time 4WD system** delivers strong power, with a 330mm of ground clearance, ensuring easy transportation.



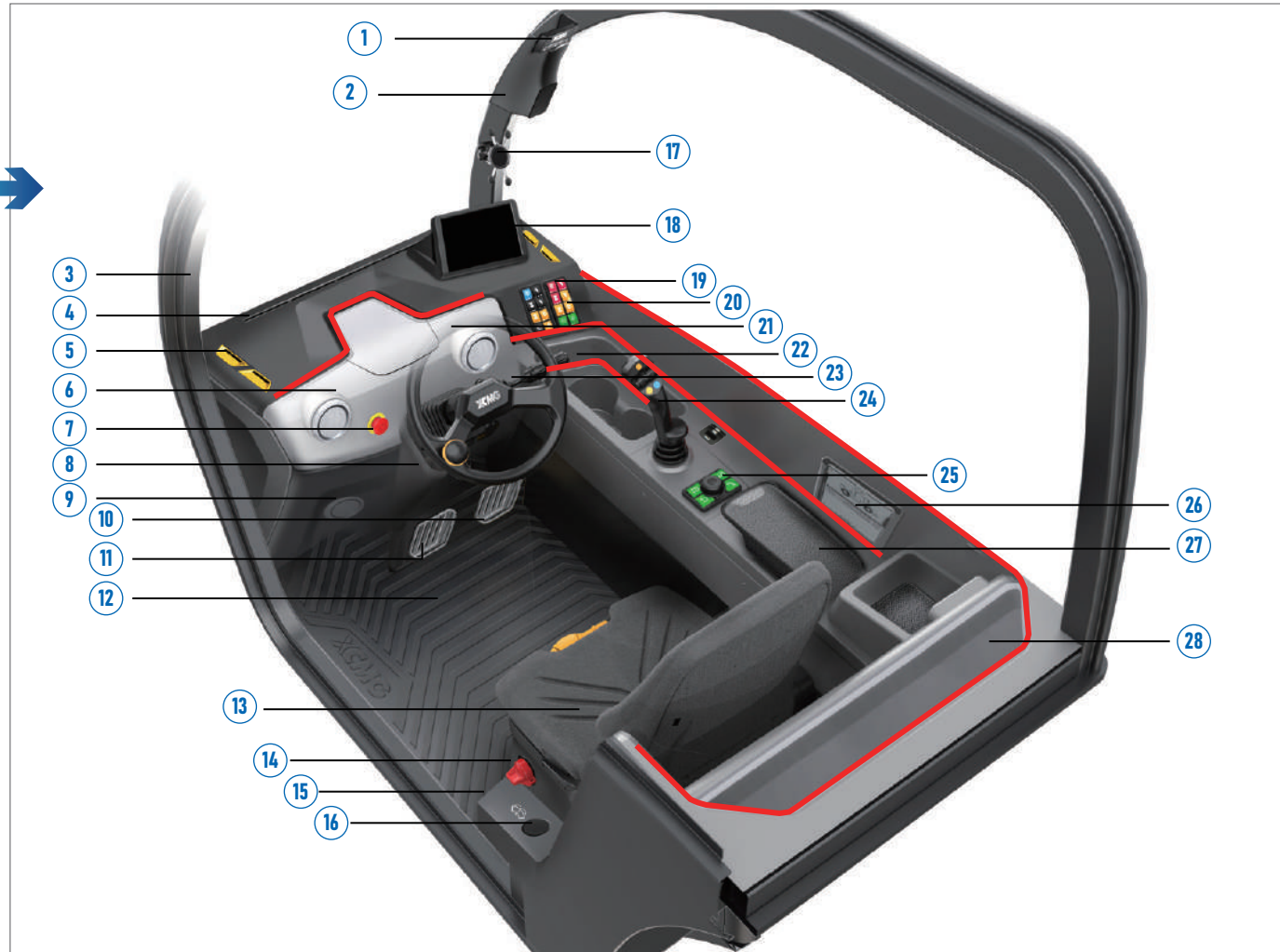
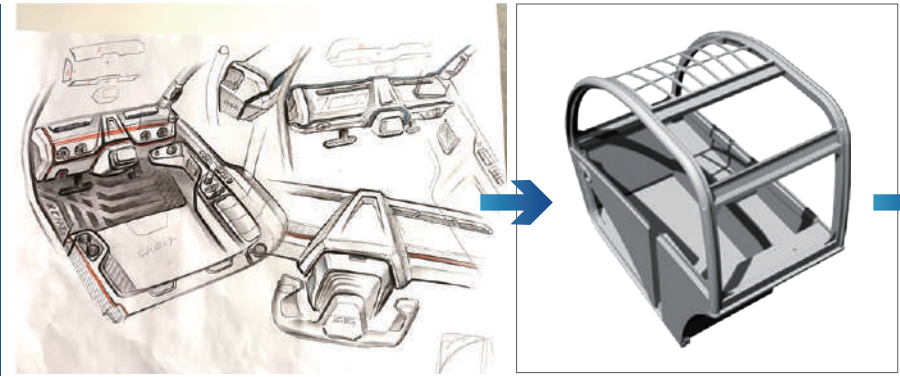
### 04 Flexibility

The minimum turning radius is **3.31m**. In narrow spaces, it can achieve agile and effortless operation.

**Three steering modes**, front axle steering, sharp-turn steering and crab steering, offers flexibility and efficient operation.



Applying ergonomics, the vehicle adopts a 5-pillar and zero-doorsill design to minimize blind spots and maximize interior space, ensuring safer operation. The user-friendly control layout enables the operation simple and efficient, while the color-coded control system improves the operating experience. It is standard-equipped with a 4-way adjustable steering column to accommodate drivers of different heights and weights. The premium air-suspension seat reduces operator fatigue, improving comfort and work efficiency.



### Stellar Journey Series

Featuring an innovative 5-pillar structural framework and zero-step skeleton, the cab delivers a broader view. Ergonomic design promotes driving comfort.

Version 1.0+ → Version 1.5 → Version 2.0

Ergonomic design

The cab delivers a broader view

1 Level Gauge	15 Safety Hammer/Fire Extinguisher (Upper Mounted)
2 Torque Limit	16 Wiper Washer
3 Follow-up Visor (upper and lower independent)	17 Phone Holder
4 Front Air Vent * 2 (Adjustable)	18 Screen (8 Inches)
5 Side Air Vent * 2 (Adjustable)	19 Silicon button * 2
6 Front Air Vent * 2 (Adjustable)	20 Power outlet/USB module (type-C port)
7 E-Stop Switch	21 Steering Wheel
8 Steering Column (4-way adjustment)	22 Glove Box
9 Lower Air Vent (Adjustable)	23 Key Switch
10 Accelerator Pedal	24 Multi-Functional Joystick
11 Brake Pedal	25 Knob Button Panel
12 Anti-slip Mat	26 Operation Instruction Card (Slot-In Type)
13 Air-suspension Seat (fabric and leather for option)	27 Arm rest (hidden storage box)
14 Power Main Switch	28 Glove Compartment (Shallow Design)



Attachments

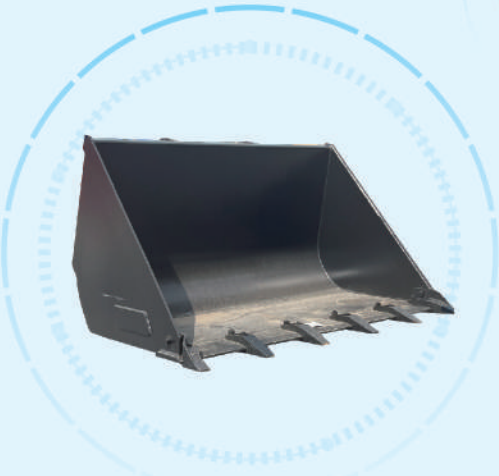
Our telehandlers offer a quick-attach feature, allowing operators to swiftly switch between various tools. We provide a wide range of attachments, including forks, buckets, Lifting Hook, which can be customized to meet customer needs.



Fork 1m



Quick-changing mechanism



Bucket 1m³



Lifting Hook 2500kg

XT2506E

TELEHANDLERS

Standard configuration

Cab
FOPS and ROPS certification
Heating and cooling air conditioning
Air suspension seat
Seat belt not fastened detection function
Multifunction proportional handle
Anti-tip system
Emergency stop
Rotating warning light
The reverse buzzer
Reversing image
8 inch main display +4.3 inch secondary display
Square adjustable steering wheel
Windshield wiper
Horn
Radio
Cigarette lighter
Cup holder
Crash hammer
Extinguisher
Power rearview mirror
Hand rest
Bluetooth phone
Phone stand
Medikit
Electrically heated glass
Two position shift
One click pressure relief

Chassis
Wet brake system
Multi-mode steering function
Rear axle midposition detection function

Boom
Length Angle real-time feedback system
Automatic fork levelling
Manual quick coupler

Optional configuration

Boom Attachment Harness
Foam filled tires
Bi-Color Warning Lights

Optional accessories

Forks
Bucket
Hooks

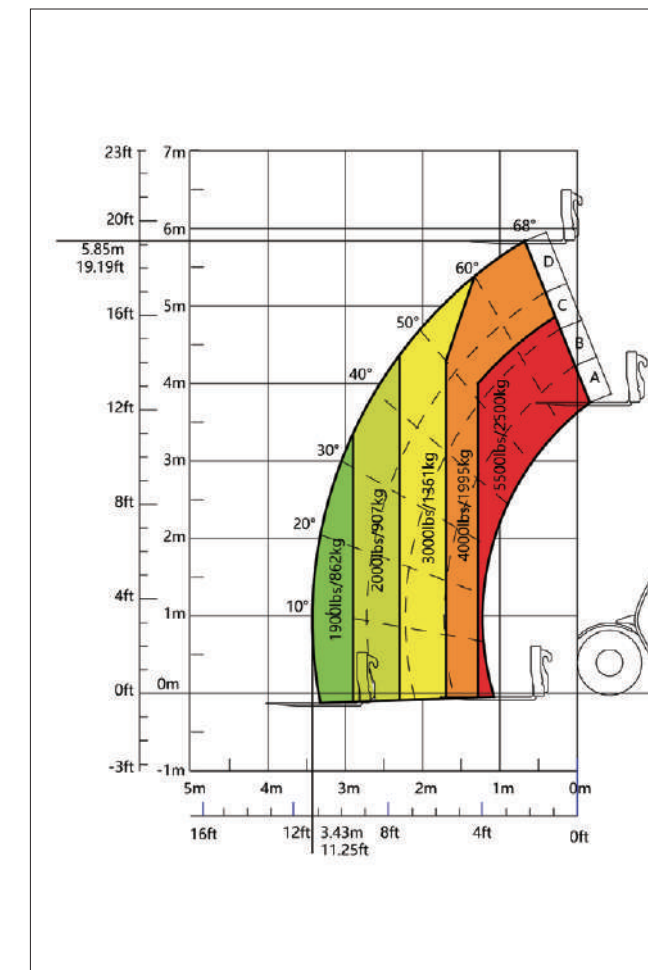




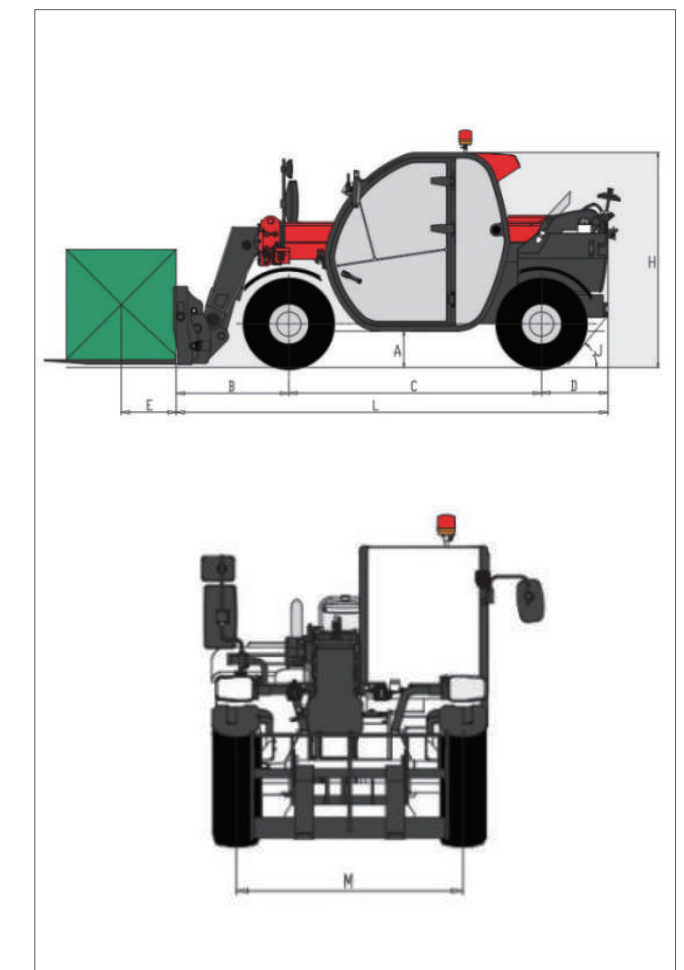
## PRODUCT PARAMETER

ITEM	PARAMETER
<b>Dimension</b>	
Overall length(without fork)	3930mm
Overall width	1835mm
Overall height	1975mm
Wheel base	2300mm
Wheel distance	1500mm
Min. ground clearance	330mm
Fork dimension	1200×122×40mm
<b>Weight and Tire</b>	
Total weight (with fork)	5100kg
Tire specification	12-16.5
<b>Performance</b>	
Max. lifting capacity	2500kg
Load center to carriage	500mm
Max. lifting height	5.85m
Lift capacity at maximum height	2000kg
Max. outreach	3.43m
Lift capacity at maximum reach	860kg
Boom up	≤7.5s
Boom down	≤5.5s
Boom extend	≤4.8s
Boom retract	≤3.5s
Fork tilt down	≤3.2s
Fork tilt up	≤3.2s
Boom luffing range	-2° ~ 68°
Carriage tilt range	-12° ~ 117°
Max. traveling speed	24.9 km/h
Max. traction force	≥32kN
Min. turning radius	≤3310mm
Frame leveling angle	±9°
<b>Power System</b>	
Traveling motor voltage	309V
Maximum power of traveling motor	70kw
Work motor voltage	309V
Maximum power of working motor	50kw
Battery specification	307.2V/160AH(standard) 307.2V/228AH(optional)
Charger specification	380VAC/32A (slow) 200A (fast)
<b>Transmission System</b>	
Numbers of gears (forward /reverse)	1/1
Transmission type	Motor drive
Steering mode	4-wheel steering
Drive Mode	4×4
<b>Hydraulic System</b>	
Hydraulicpumtype	Piston pump
Hydraulic system pressure	28Mpa
Hydraulic system flow	100L/min
Hydraulic oil tank capacity	100L

## LOAD CHART






## STATIC DIMENSION



A	Min. ground clearance	330mm
B	Front overhang	1025mm
C	Wheel base	2300mm
D	Rear overhang	605mm
E	Load center to carriage	500mm
L	Overall length	3930mm
H	Overall height	1975mm
M	Overall width	1835mm
I	Approach angle	--
J	Departure angle	50°



Product Type		L*W*H/mm (Without Fork)	Total Weight/kg (Within Fork)	Rated Capacity /kg	Max. Lifting Height/m	Payload at Max. Lifting Height/kg	Max. Outreach /m	Payload at Max. Outreach /kg	Max. Travelling Speed/km/h	Power Source	Engine Brand /Model	Rated Power/Kw	Emission Standards
<div>Agricultural Type</div> 	XT3207K	5192*2378*2574	8400	3200	7	3000	4	1450	≥40	Diesel engine	DEUTZ BF4M2012	72	China National III
	XT2506E(CE)	3930*1835*1975	5100	2500	5.85	2000	3.43	860	≥24.9	Electric Power	Standard Battery : 307.2V/160AH Optional Battery : 307.2V/228AH		
	XT3207K(CE)	5192*2378*2574	8400	3200	7	3000	4	1450	≥40	Diesel engine	DEUTZ TCD3.6L4	74.4	Euro V
	XT519U(ANSI)	3900*1810*1950	5000	2500	5.85	2000	3.43	860	≥25	Diesel engine	Kubota V3307	55.4	T4F/Euro V/China National IV
<div>Constructional Type</div> 	XT3514K	6070*2350*2450	10575	3500	13.4	2000	9.3	500	≥32	Diesel engine	Cummins QSF3.8	97	China National III/Euro III A
	XT4014K	6160*2420*2550	11200	4000	13.57	3000	9.4	1500	≥27	Diesel engine	Cummins QSF3.8	74	China National III/Euro III A
	XT4018K	6305*2420*2550	12000	4000	17.55	2500	13.4	850	≥27	Diesel engine	Cummins QSF3.8	74	China National III/Euro III A
	XT4514K	6267*2350*2540	12200	4535	13.2	2948	9.3	1496	≥32	Diesel engine	Cummins QSF3.8	97	China National III/Euro III A
	XT5017K	6120*2560*2540	15800	5000	17.1	2267	13.15	1360	≥32	Diesel engine	Cummins QSF3.8	97	China National III/Euro III A
	XT5517K	6120*2560*2540	16782	5443	17.1	2267	13.15	1587	≥32	Diesel engine	Cummins QSF3.8	97	China National III/Euro III A
	XT3514K(CE)	6160*2420*2550	11000	3500	13.7	3000	9.4	1300	≥27	Diesel engine	DEUTZ TCD3.6L4	74.4	Euro V/T4F
	XT4018KH(CE)	6270*2320*2480	12200	4000	17.55	2500	13.4	850	≥33	Diesel engine	DEUTZ TCD3.6	74	Euro V
	XT844U(ANSI)	6170*2500*2470	10675	3629	13.4	2722	9.3	550	≥32	Diesel engine	DEUTZ TCD3.6	55	T4F
	XT1056U(ANSI)	6120*2560*2540	16000	4536	17.1	2267	13.15	1360	≥32	Diesel engine	Cummins QSF3.8	97	T4F
	XT1256U(ANSI)	6120*2560*2540	16782	5443	17.1	2267	13.15	1587	≥32	Diesel engine	Cummins QSF3.8	97	T4F
<div>Heavy-load Type</div> 	XT6514K	6520*2630*2600	14860	6500	13.5	2250	9.3	1400	≥32	Diesel engine	Cummins QSF3.8	97	China National III/Euro III A
	XT8010K	6334*2650*2560	14300	8000	9.4	4500	5.2	2500	≥32	Diesel engine	Cummins QSF3.8	97	China National III
	XT18010K	7870*2500*3015	24500	18000	9.8	9500	5.5	4500	≥25	Diesel engine	Cummins QSF4.5	125	China National IV
	XT23010K	8623*2800*3058	32800	23000	9.8	16000	5.8	7000	≥25	Diesel engine	Cummins QSF4.5	125	China National IV



## Application Scenarios





