



XC948EV

ELECTRIC WHEEL LOADER



SOLID TO SUCCEED



Operating Weight 15500kg

Bucket Capacity 2.4m³

Rated Power 204kW

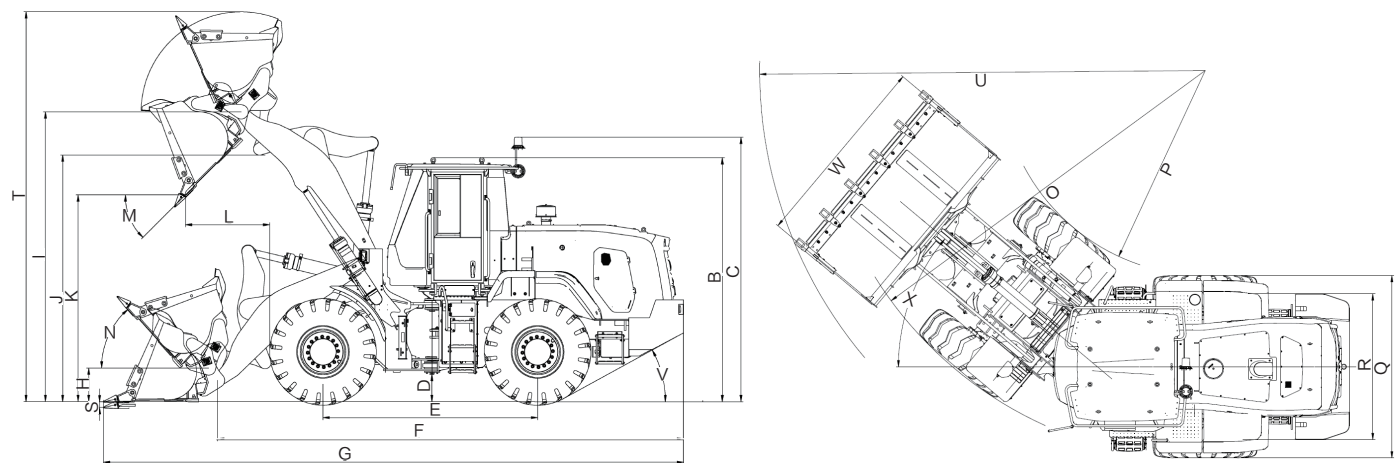


XCMG OFFICIAL WEBSITE

Add: No. 99 Kunpeng North Road, Economic and Technological
Development Zone, Xuzhou City, Jiangsu Province
Zip code: 221122 Web: <http://www.xcmg.com>
Version: N202505V1



MAIN SPECIFICATIONS



	Dimension and Specification		Parameter
B	Height to top of cab		3401 mm
C	Height to top of warning Light		3689 mm
D	Ground clearance		391 mm
E	Wheelbase		3050 mm
F	Overall length (without bucket)		6596 mm
G	Transportation length (bucket on the ground)		8192 mm
H	Height to hinge pin, bucket laid flat		470 mm
I	Height to hinge pin, fully raised		4050 mm
J	Lift arm clearance at max. lifting		3445 mm
K	Dumping clearance: bucket at 45°		2890 mm
L	Dumping reach: bucket at 45°		1201 mm
M	Dumping angle at full lift (on stopper)		45 °
N	Rollback angle	Bucket on the ground	43 °
		Max. lifting height	48 °
O	Turning radius: over tyres		5521 mm
P	Turning radius: inside of tyres		2891 mm
Q	Width over tyres		2580 mm
R	Wheel track		2060 mm
S	Digging depth		80 mm
T	Max. lifting height		5447 mm
U	Turning radius: over bucket		6318 mm
V	Departure angle		28 °
W	Bucket width		2750 mm
X	Steering angle		40 °

Category	Item		Parameter
Overall Parameter	Operating Weight		15500 kg
	Bucket Capacity		2.4 m³
	Rated Load		4000 kg
	Tipping Load	Fully articulated	≥8000 kg
EIC System	Battery		LFP
	Battery Voltage		521 V
	Battery Capacity		180.5 kWh
	DC Charging Power		160 kW
	Electrical System Voltage (Low)		24 V
	Low Voltage Battery Voltage		24 V
	Low Voltage Battery Capacity		120 Ah
	Charging Time	180.5 kWh	160 kW–55 min
			240 kW–42 min
		242 kWh	160 kW–73 min
240 kW–50 min			
Driveline	Travel Speed		18/36 km/h
	Brake Distance		10 m
	Tyre		20.5R25
	Min. Ground Clearance		391 m
Working Hydraulic System	Type		Variable hydraulic system
	Pump		Variable displacement piston pump
	Rated Flow		219 L/min
	Control Valve		Third function electrically–controlled multiway valve
	System Pressure		23 Mpa
	Total Circle Time		11.5 s
Axle	Type		Four–wheel drive
	Front Axle		Fixed
	Rear Axle		Center Oscillation/with 12° oscillating angle to each side
	Reduction Gear		Planetary final drive in wheel hubs
	Differential		Front axle limited–slip differential/ Rear axle conventional differential
Steering Hydraulic System	Type		Coaxial flow amplifier steering system
	Pump		Variable displacement piston pump
	Rated Flow		56.4 L/min
	Hydraulic Cylinder		2
	System Pressure		18 Mpa
	Max. Steering Angle		40°

• The technology of XCMG electric wheel loaders is subject to constant improvement and upgrading. In case the specifications or detailed appearance contained in this brochure differ from actual products, the latter shall prevail.

• XCMG reserves the right of final interpretation for the above. Our products may be modified without prior notice to users.