

READY TO WORK

Quieter pure electric drive, zero-emission operation



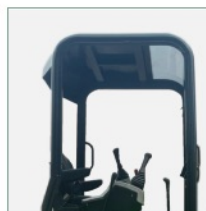
YOUR NEW CHOICE

Traditional small-scale diesel-equipment operations have always been affected by noise and exhaust emissions, imposing a considerable burden on the physical and mental health of construction workers. Besides, the electrification for mini excavators has been a challenge. Now, Jingong New Energy brings this mini electric excavator with mature technology. The procurement cost of this mini electric excavator fairly equals that of diesel equipment of the same tonnage, while the electric ones offer more economic, environmental, and OHS benefits.



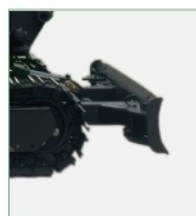
Telescopic Crawler Belt

The chassis crawler features a flexible extension and retraction mechanism. When fully retracted, the crawler belt's maximum width is under one meter, allowing the excavator to maneuver freely in tight spaces for operational tasks.



High-standard cab

The cab is designed to meet international safety standards for ROPS/TOPS, and the ergonomically crafted seat allows for optimal adjustment to achieve the best sitting posture.



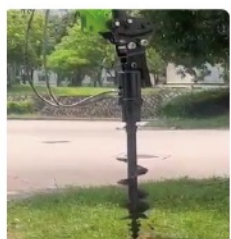
Bulldozer blade

The cutting stroke reaches 325 mm, outperforming products of the same level and facilitating the operation of the excavator in getting on and off flatbed trucks and climbing steps.



High-efficiency hydraulic system

The adoption of the load sensing system enables more coordinated and comfortable operation. The digging performance is superior to that of models of the same level.



Main Parameters

Operating weight	1,800 kg
Standard bucket capacity	0.4 m ³
Maximum digging force	15.2 kN
Slewing speed	9.1 rpm/min
Gradeability	58 % (30 °)
Speed (high/low)	4/2 km/h
Endurance (depending on working conditions)	4-6 h
Charging time (fast charging)	1~1.5 h
Ambient temperature	-25~65 °C

Power System

Motor type	Permanent magnet synchronous motor
Motor rated power	10 kW
Battery type	Lithium-ion batteries
Battery capacity (customizable)	15.7 kWh
Operating voltage	76.8 V

Onboard Electrical System

Working voltage	12 V
-----------------	------

Hydraulic System

Hydraulic oil tank capacity	13 L
Hydraulic flow	2×17.3 L/min
Working pressure	215 bar

1. Jingong New Energy products are continually being updated and enhanced. We reserve the right to modify the design and specifications without prior notice to users.
2. The product appearance depicted in the photograph may differ from the actual model. The final product appearance are subject to physical verification.





Efficient and Flexible:

The tail-free slewing enables 360° barrier-free and flexible operation. The boom can swing laterally on both sides, satisfying operations such as working close to walls and side digging.



Reliable:

High-quality core components guarantee an exceptionally low failure rate, ensuring a worry-free user experience.



Economic efficient:

The initial purchase cost of this mini electric excavator is equal to that of a diesel one. However, electric excavators are more economical to operate and incur lower maintenance costs.



Safe to Use:

The IP67-level-proof power system and strictly certified cabins to comprehensively ensure your safety.



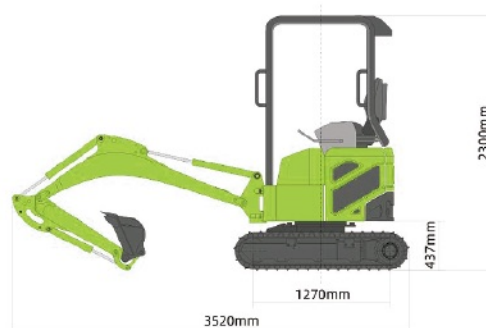
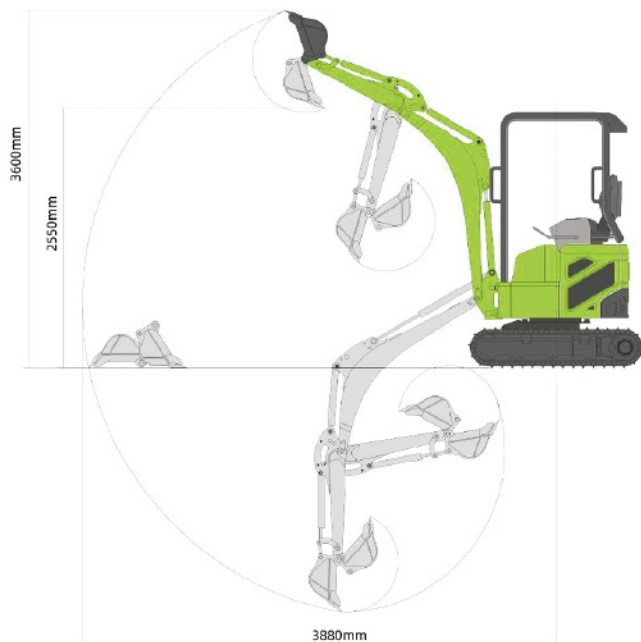
Versatile:

This equipment is highly adaptive to a diverse range of accessories. The track exhibit flexibility, allowing for stretching and contraction, suitable for various scenarios.



Simple and comfortable:

The highly integrated display and operational functions, along with superior lighting and an enhanced scope of vision, promote easier work processes.



Parameter

Travel speed (high/low)	4/2 km/h
Gradeability	58 % (30°)
Full length when loaded	3,545 mm
Full width when loaded	990 mm
Full height when loaded	2,340 mm
Height at the top of the cabin	2,340 mm
Crawler plate width	230 mm
Rear swing radius	650 mm
Hydraulic tank/oil capacity	13/21 L

Parameter

Set pressure (working device)	21.5 MPa
Set pressure (slewing)	18.6 MPa
Set pressure (traveling)	21.5 MPa
Maximum flow of hydraulic pump	2x17.3 L/min
Number of crawler plate	74 for each side
Number of supporting roller	3 for each side
Maximum digging radius	3,900 mm
Maximum digging depth	2,310 mm
Maximum vertical digging depth	1,910 mm
Maximum excavation height	3,540 mm
Maximum unloading height	2,440 mm
Maximum digging force (rod/bucket)	15.2 kN

Forward-looking technology



Vehicle
Development



Software



Electrics



Processes



Tronic
Assemblies



Mechanical



Hydraulics



Others

Jingong New Energy has gathered the earliest outstanding talents engaged in the electrification of commercial vehicles and construction machinery at home and abroad, and possesses the necessary knowledge structure for the industrialization of electric construction machinery, such as machine design, EIC system integration, software control, advanced electric drive architecture, electric drive hydraulics, high-end chassis, charging and battery swapping integrated electric technology, and intelligent network connection. Through precise analysis of the market and customer demand-oriented, we have conducted in-depth research on the key core technologies in the field of electric drive travel and electric drive operation of construction machinery, and applied for dozens of patents, which provide technical support for the subsequent development of the company's new products and the maintenance of technological advancement. Solving the industry pain point of high cost and high emission, we provide customers with electrified, intelligent and unmanned equipment system solutions in the scenarios of iron and steel, mines, ports, infrastructure, tunnels, etc., which bring significant economic and environmental benefits to customers.



Mixing
plant



steel



stone



logistics



water
conservancy



mining



thermal
power



tunneling

Since obtaining the first set of electric loader in Fujian in 2021, the company has researched and developed and formed sales of more than ten products, mostly the first in the industry, such as pure electric loaders (5 tons, 6 tons, 7 tons), battery detachable & replaceable loaders, hybrid loaders, pure electric wheeled excavators, electric forklift loaders, electric forklifts, pure electric rollers, electric wide-body dump trucks, electric rigid mining trucks, and insulated bucket-arm trucks (vehicle-carrying type, spider-type), and so on, which are the first in the industry, and it is equipped with the capability of providing scenario-based solutions for new energy equipments.

With two manufacturing bases in Jinjiang, Fujian Province and Zhenjiang, Jiangsu Province, the company has built a perfect operation and supply chain system with an annual production capacity of 25,000+ units.



Fujian Jinjiang Manufacturing Base



Jiangsu Zhenjiang Manufacturing Base

