



LM435A

LM445A

LMA TELEHANDLERS



**NEW HOLLAND
CONSTRUCTION**

www.newhollandconstruction.com

The New Power

The LM-A Series for more power, capacity and

With the versatility to meet the needs of agriculture and construction, the LM-A telehandler range offers more power and torque than ever before. When it comes to performance, each model in the range now has faster hydraulics for a real boost in productivity. The three models offer a lift capacity from 3.0 to 3.1 tonnes and lift height from 6.8 to 8.97m. A choice of specification ensures each model has everything to meet a wide range of needs; general purpose materials handling, heavy silage and feedlots as well as racking. Whatever the task at hand, there is an LM-A model designed for the job.



reach



Choose the Controls

Mono Ramp joystick provides single lever operation and push button boom telescope with "Ramp" feature for smooth starts and stops. For maximum productivity and comfort, the pilot assisted Flow Sharing system is standard on machines with powershift transmission. Proportional telescope control and the pressure sensing/flow sharing feature combines for true multifunctional control.



Choose the Power

A choice of 95 and 110 hp engines is available, with respective torque outputs of 390Nm and a truly massive 480Nm. Built to meet European Tier II emission standards, these powerful engines are quiet and fuel efficient and are rear mounted to provide optimum balance with a reduced need for heavy counterweights.



Choose the Capacity

With capacities of 3.0 and 3.1 tonnes, all models have the lift capacity to tackle the most demanding of tasks. However, these figures do not tell the whole story. Power into a heavy load with an LM-A telehandler – it will have the hydraulic capacity to raise it both quickly and smoothly. This is the true measure of capacity.



Choose the Height

Choose a lift height of 6.8m for general use or 8.97m when extra reach is needed. With its in-depth understanding of construction and agriculture, New Holland knows how to cater for the different demands of livestock, large arable and mixed farms as well as construction contractors.

Now there is no need to compromise.

A machine tailored to your demands.

The three LM-A series models can be specified to meet the diverse demands of farmers and contractors alike. Select the engine power, lift capacity and reach to choose the model and then establish which type of hydraulic control best matches the application. A hydraulic trailer brake and rear pick-up hitch are also available.



		LM435A	LM435A	LM445A
New Holland Engine(*) displ.	(l)	4.5	4.5	4.5
Aspiration		Turbo	Turbo intercooled	Turbo
Max. power	[kW/hp(CV)]	71/95	82/110	71/95
Rated speed	(rpm)	2200	2200	2200
Max torque at 1400 rpm	(Nm)	398	480	398
Transmission type		PowerShuttle™	PowerShift™	PowerShuttle™
Torque converter diameter	(mm)	335	310	335
Hydraulics flow	(lpm)	110	110	110
Hydraulic controls std.		Mech. joystick	Flow sharing prop. joystick	Mech. joystick
Max lift height	(m)	6.8	6.8	8.9
Max lift capacity	(kg)	3100	3100	3000

(*) Developed by CNH Engine Corporation



Versatile Performance With Added Reach, LM435A

With 6.8m lift height and 3.1 tonne capacity, the LM435A is the most versatile model in the range. Offered with a 95hp engine and heavy-duty 4-speed powershuttle transmission for productive and economical performance in most applications, or with a 110 Hp engine and powershift transmission for heavy materials handling and towing when absolute productivity is required.



Maximum lift height for stacking, LM445A

Aimed at users who need to stack high, the LM445A will lift a 3.0 tonne load to a dizzy 8.9 m. Powered by a 95Hp engine and fitted with a Mono Ramp hydraulic system as standard, this is the model to choose for low-rise building sites and tall hay sheds.

Rear engine power for balance, traction and stability.

Designed for a variety of applications, LM-A telehandlers benefit from a rear mounted engine. This layout offers the best weight transfer when handling heavy loads, optimising traction and providing remarkable stability on steep inclines. Although a rear counter weight is still required, its mass can be reduced to ensure the telehandler retains an excellent power to weight ratio. This is of critical importance in applications that include building maize and grass silage clamps as well as general use in boggy conditions.



Massive torque for maximum output

Telehandlers have evolved to offer tremendous versatility. Loading, hauling trailers, cleaning feedlots, feeding and stacking are all tasks that place different demands on the machine. The LM-A series benefits from engines designed to suit these demands, with high levels of torque to ensure hydraulic and transmission performance is not compromised in really tough conditions. Up to 42% more torque is now available to provide a massive hike in productivity.



Quiet Efficiency

Developing 95 or 110hp at a modest 2200rpm, the 4.5 litre turbocharged engines powering all LM-A models are specifically designed for tough agricultural and construction applications. Quiet and fuel efficient, these engines benefit from high capacity air and oil filters to offer maximum protection over extended engine service intervals. This helps to reduce maintenance demands and costs without compromising longevity.



Designed and built to handle the power

High torque loads pass through the transmission. For reliability and longevity, Series LM-A are fitted with extremely robust gearbox and axles. The main driveshaft is split into two, with a mid-mount bearing. This design eliminates torque-induced flex, for best reliability.



Engine power boosts hydraulic performance

Powering a 110 lpm capacity hydraulic pump, these engines have sufficient capacity in reserve to operate the hydraulics and transmission. This is an important aid to productivity, LM-A telehandlers having the torque to scale an incline while raising and tipping a heavy load such as a grab full of grass.

Practical Design for Productivity and Comfort

Operator comfort is fundamental to all New Holland Construction machines. The cab on LM-A telehandlers is no exception. Finished to an extremely high standard, with quality mouldings on the door, control panel and sides, it is among the widest in its class. It also has excellent ergonomics. The rounded cab profile is more than just attractive; it is practical too. Visibility is enhanced by careful design, a large glass area improving the view of the curved fenders and bodywork. To further enhance operator comfort, Ride Control is now available as an option. This dampens the boom to absorb up and down movement, providing a considerably smoother ride for the operator over uneven ground. Enhanced comfort - typically New Holland Construction.



Wide opening door for easy access

All LM-A models feature a split door with an upper glass section that can be locked open if required. When the operator needs to enter and leave the cab frequently, the whole door locks back for fast and easy access.

Modern, practical and durable

Easy to clean and durable, the LM-A cab interior is built to withstand heavy use yet retain its style and comfort, providing a modern working environment that keeps looking good yet remains practical.



First class accommodation

A high specification suspended cloth seat is standard on all models. It offers a full range of adjustments for weight and reach with excellent back and thigh support. Combined with the tilting steering column and ergonomic control layout, it helps all operators quickly find a comfortable working position. Air conditioning is standard.



Ease of operation for safety and productivity

Matching performance and safety has never been easier. The safe load indicator has green, orange and red warning lights. These come on progressively as safe load limits are reached. If the safe load limit is exceeded an audible alarm sounds, alerting the operator so action can be taken before safety is compromised.

Real Performance and Agility.

A substantial 335mm torque converter ensures full engine power and torque is passed through the transmission. When moving a heavy load up a steep incline, an LM-A handler just keeps going, getting the job done with the minimum of fuss. Now offering up to 42% more torque, LM-A telehandlers are the machines to choose for demanding applications.



Rugged and easy to use the PowerShuttle™ transmission

With its speed matched forward and reverse gears, the PowerShuttle transmission makes it easier to smoothly change direction and handle all loads efficiently. With four forward and reverse speeds, there is a ratio to match heavy loading and re-handling applications. For added performance, a transmission disconnect system is fitted. By pressing the brakes or a button on the joystick, full power can be diverted from the transmission to the hydraulics for maximum lifting performance.



A steering mode for every application

Three steering modes are available. All Wheel-Steer offers optimum manoeuvrability and a turn radius of under 3.50m. Front wheel steering is selected for stability and control at high transport speeds. Crab Steer is useful when stacking pallet loads or working close to walls and buildings. Wheel alignment lights assist the operator to centre the wheels when switching between steering modes.



When others give up, LM-A keeps going

The heavy-duty cast axles are fitted with a limited slip differential lock in the front axle. Maximum traction is delivered just when it is needed most, enabling the operator to power into a load or scale a silage clamp without slip or lost momentum.



PowerShift™ transmission meets toughest demands with minimum effort

Operated via a twist collar on the shuttle lever, the PowerShift transmission is available on the LM435A. Gear shifts can be made under load with minimum loss of momentum. PowerShift is easy to operate, ensuring the operator can select the right speed for the job, first time and every time.

Hydraulics that Combine Exceptional Power w

With a maximum output of 110 litres per minute at 260 bar pressure, the hydraulic pump on all LM-A models has sufficient power and capacity to ensure cycle times are reduced, even at low engine speeds. It is not just when operating several functions at once that this power and performance is of value. Take less time lifting a heavy load to full boom height, catch a full grab of grass with less effort or break out a fork full of manure faster.



Helping every user become a smooth operator

When it comes to handling loads such as pallets, big fertiliser bags and bales, the Mono Ramp joystick system adds gentle start-and-stop boom action. This helps smooth the control of the hydraulics. This system enables the control of all functions from the single joystick, speeding up the operation of attachments like a silage cutter, grab bucket or 4in1 bucket.

With Absolute Precision.



Seamless handling performance

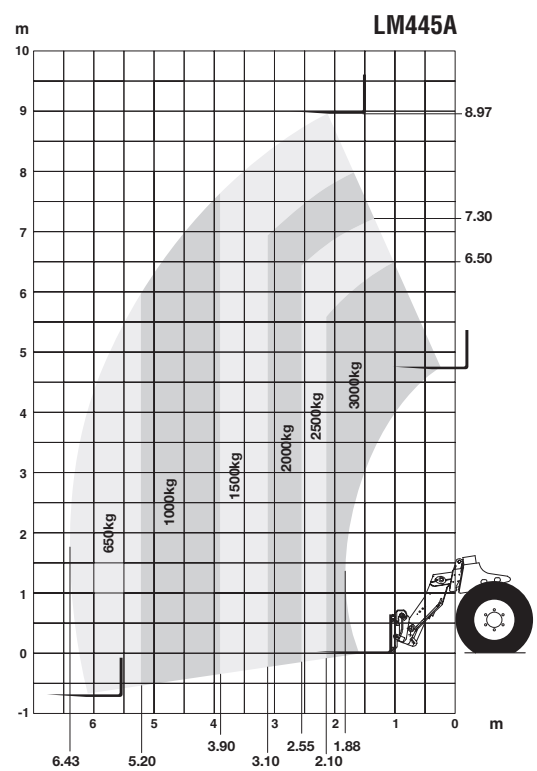
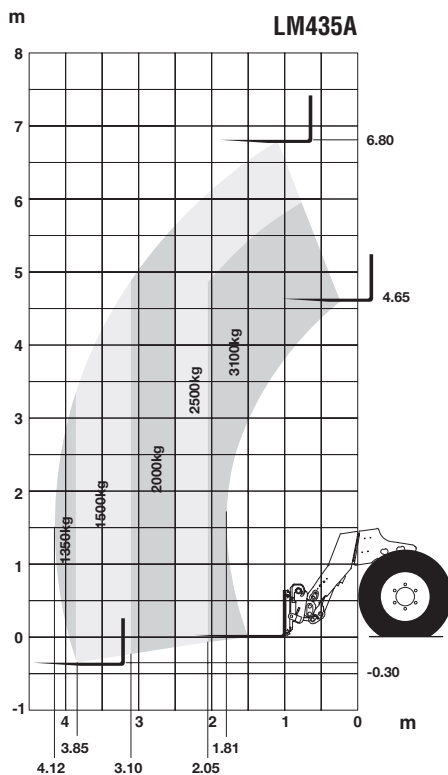
Standard on the 110hp LM435 model, the Flow Sharing proportional joystick system allows simultaneous operation of more than one function and variable speed control of the boom. The Flow Sharing joystick is servo assisted providing low effort operation. In applications such as loading grain trailers with a bucket, working with seed trays and potato boxes or precision pallet work, this system can help improve cycle times.

Specifications



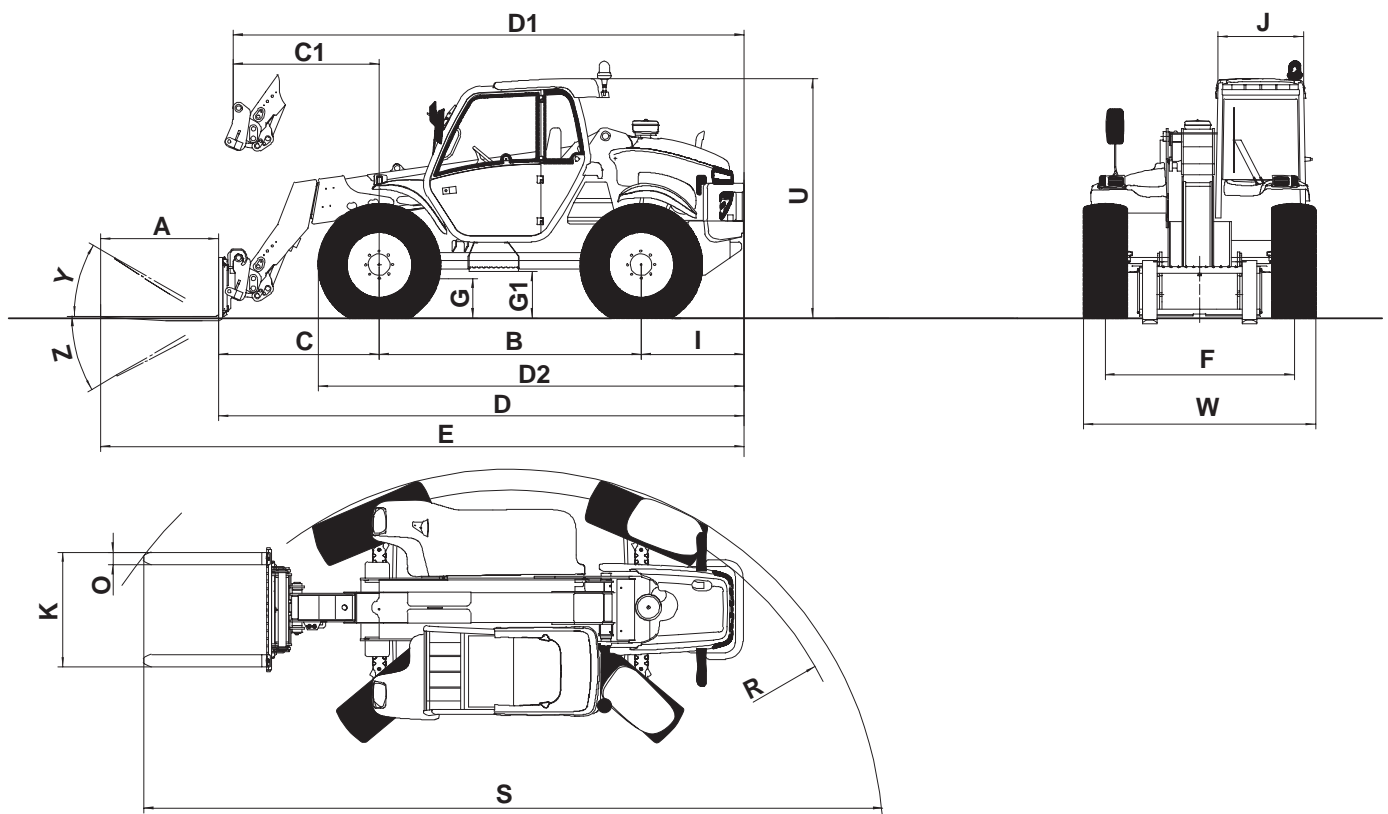
		LM435A	LM435A	LM445A
New Holland Engine(*)				
Displacement	(l)	4.5	4.5	4.5
Aspiration		Turbo	Turbo intercooled	Turbo
Max. power	[kW/hp]	71/95	82/110	71/95
Rated speed	(rpm)	2200	2200	2200
Max torque at 1400 rpm	(Nm)	398	480	398
Transmission				
Type		PowerShuttle™	PowerShift™	PowerShuttle™
Torque converter diameter	(mm)	335	310	335
Hydraulics flow	(lpm)	110	110	110
Hydraulic controls std.		Mech. joystick	Flow sharing prop. joystick	Mech. joystick
Max lift height	(m)	6.8	6.8	8.9
Max lift capacity	(kg)	3100	3100	3000
Brakes				
Braking		All 4 wheels	All 4 wheels	All 4 wheels
No of discs per axle		8	8	8
Actuation			Hydraulic power assist	
Wheels & Tyres				
Standard wheels & tyres		15.5 x 24	15.5 x 24	15.5 x 24
Steering				
Description			2WS / 4WS / Crab S	
Adjustable Steering Column		Standard	Standard	Standard

Load chart



		LM435A	LM435A	LM445A
Dimensions				
A - Pallet Fork length	(mm)	1200	1200	1200
B - Wheel base	(mm)	2660	2660	2660
C - Axle to fork heel	(mm)	1635	1635	1700
C1 - Axle to carrier	(mm)	1485	1485	1550
D - Length fork heel to counter weight	(mm)	5380	5380	5445
D1 - Length carrier to counter weight	(mm)	5230	5230	5295
D2 - Length front tyre to counter weight	(mm)	4365	4365	4365
E - Overall length	(mm)	6580	6580	6645
F - Wheel track	(mm)	1930	1930	1930
G - Ground clearance	(mm)	400	400	400
G1 - Clearance under steps	(mm)	475	475	475
I - Length rear axle to counter weight	(mm)	1085	1085	1085
J - Cab width	(mm)	865	865	865
K - Max fork spacing	(mm)	1163	1163	1163
O - Fork section	(mm)	125x45	125x45	125x45
R - Turning radius over tyres	(mm)	3575	3575	3575
S - Turning diameter over forks	(mm)	7945	7945	8010
U - Cab height	(mm)	2450	2450	2450
W - Overall width	(mm)	2385	2385	2385
Y - Attachment roll back angle	(°)	10.5	10.5	10.9
Z - Attachment dump angle	(°)	146.5	146.5	122.2
total rotation angle (Y+Z)	(°)	157.0	157.0	133.1
T - Dump angle at full height	(°)	71.2	71.2	46.2
Total weight with forks, full fuel tank and driver	(kg)	7265	7265	7455
Max forward reach capacity	(mm/kg)	4110/1350	4110/1350	6430/650
Draw bar pull	(DaN)	8600	8600	8600

(*) Developed by CNH Engine Corporation





MINI-EXCAVATORS



SKID-STEER LOADERS



BACKHOE LOADERS



TELEHANDLERS

YOUR NEW HOLLAND CONSTRUCTION EQUIPMENT DEALER

New Holland Construction shifts into a higher gear, bringing extraordinary global manufacturing resources and product support systems to the market. With the products, people and determination to be the major player in the light construction equipment industry, few companies can lead their customers into the future with the same guarantee of success.

Specifications shown in this brochure may vary from country to country according to local requirements. Photos may depict standard or optional equipment according to local market specifications. Models and specifications shown may be subject to change by the manufacturer without prior notification and without incurring any obligation resulting from such modifications. Printed in Australia - 11/04 - NHC380

NEW HOLLAND CONSTRUCTION, 1 Foundation Place Prospect NSW 2148 - Australia



**NEW HOLLAND
CONSTRUCTION**

The New Power