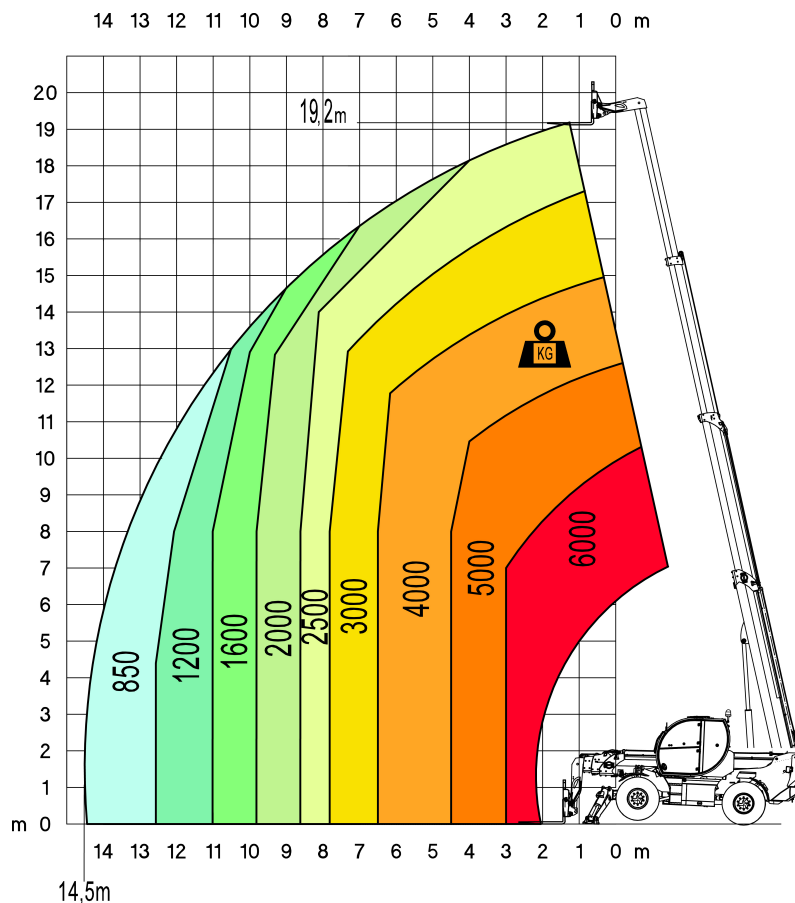




**TH 6.20**



**TH 6.20**

<b>MACHINE MODEL</b>	Rotating telescopic handler	TH 6.20
	Rotating telescopic handler	6.000 kg (c.d.g. 600 mm)
	Maximum lifting height	19,20 m
<b>ENGINE</b>	Type	<b>DEUTZ TCD 3.6 L4 - stage IV</b>
	Rated power	100 KW - 136 HP at 2.200 rpm
	Maximum torque	500 Nm at 1.600 rpm
	Displacements	3,6 l
	Cylinders	4 in line
	<b>HYDRAULIC</b>	Max. operating system pressure
	Circuit type	Load sensing
<b>TRANSMISSION</b>	Type	Hydrostatic
	Model	Bosch - Rexroth
	Maximum pressure	500 bar
	Displacements	Variable displacement pump Variable displacement motor
	Gear box	2 speeds forward-reverse
<b>WEIGHTS</b>	Total unladen	***** kg
	Front axle unladen (boom retracted and lowered)	***** kg
	Rear axle unladen (boom retracted and lowered)	***** kg
<b>TANKS CAPACITIES</b>	Fuel tank	150 l
	AdBlue	10 l
	Hydraulic oil tank	110 l
	Engine oil tank	16 l
	SistemCooling liquid	20 l

